

OLYMPUS[®]

Your Vision, Our Future

EVIS EXERA III

EVIS EXERA III COLONOVIDEOSCOPE

PCF-H190L/I

Markedly improved visibility and handling in a slim design





New Wider Angle

The new PCF-H190 scope adds 30° to its field of view to attain 170°, providing the same view as the larger CF scope. This wide view, combined with HDTV and NBI, enables closer, more detailed examination and observation.

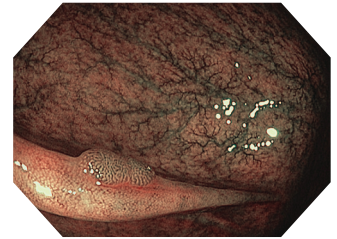


RIT (Responsive Insertion Technology)

RIT combines three proprietary insertion tube technologies: HFT (High Force Transmission), PB (Passive Bending), and variable stiffness. These technologies are designed to facilitate complete colonoscopies by improving scope handling, insertability, and ergonomics. PB helps EVIS EXERA III 190 Series scopes move through acute bends in the colon. HFT provides improved operator control for both pushing and twisting maneuvers. Variable stiffness allows the physician to adjust the rigidity of Olympus scopes as needed by simply turning an adjustment ring on the scope's control section.

NBI (Narrow Band Imaging)

NBI in EVIS EXERA III 190 Series scopes provides twice the viewable distance of EVIS EXERA II 180 Series scopes.



Waterproof One-touch Connector

A new connector design minimizes the effort required for setup prior to and in between cases. In addition, it is fully submersible and eliminates the need for a water-resistant cap and the associated risk of an expensive repair due to accidental immersion.



Optical System	Field of view	170°
	Direction of view	Forward viewing
	Depth of field	2-100 mm
Insertion Section	Distal end outer diameter	11.7 mm
	Distal end enlarged	
	Insertion tube outer diameter	11.5 mm
	Working length	L: 1680 mm I: 1330 mm

Instrument Channel	Channel inner diameter	3.2 mm	
	Minimum visible distance	3.0 mm from the distal end	
Bending Section	Direction from which endotherapy accessories enter and exit the endoscopic image		
	Angulation range	Up	180°
		Down	180°
		Right	160°
Left		160°	
Total Length	L: 2005 mm I: 1655 mm		
Compatible EVIS EXERA System	Video System Center OLYMPUS CV-190 Xenon Light Source OLYMPUS CLV-190		

Image courtesy of Tonya Kaltenbach, MD.

Specifications, design, and accessories are subject to change without any notice or obligation on the part of the manufacturer. Olympus is a registered trademark of Olympus Corporation, Olympus America Inc., and/or their affiliates.