

Technology That Powers Your Vision

The VISERA ELITE™ III Surgical Imaging Platform



Introducing Our Latest-generation Surgical Imaging Platform

VISERA ELITE™ III Surgical Imaging Platform



VISERA ELITE III platform delivers advanced imaging centered around light, color, and clarity. It is the future-ready surgical imaging platform with software upgrades and technology that allows you to focus on your procedures, while reducing up-front and future costs.*

LIGHT



Bright Image

COLOR



More Colors*

CLARITY



Never Lose Focus**

* Data on file with Olympus as of 04/2025.
** Continuous Autofocus is designed to automatically maintain image focus and works in conjunction with Extended Depth of Field (EDOF) technology to maximize the in-focus area.

Introducing Our Latest-generation Surgical Imaging Platform

VISERA ELITE™ III Surgical Imaging Platform

Technology That Powers Your Vision

➤ **Optimized Investment**
Tailored to Your Needs

➤ **Beyond Visualization**
See, Treat, and Connect.



➤ **Advancing Surgical**
Visualization

➤ **VISERA ELITE III**
Product Overview

Configurations and Compatibilities

Optimized Investment Tailored to Your Needs

One System for All

Designed to meet the needs of multiple specialties like general surgery, urology, gynecology, ENT and more, VISERA ELITE™ III surgical imaging platform offers **3D and 4K imaging, Narrow Band Imaging™ (NBI™) technology*** and the **Yellow Enhancement (YE) mode**, all in one system. Benefit from compatibility with scopes, camera heads, and ENDOEYE™ videoscopes to adjust your investment for efficiency.**

* NBI is not intended to replace histopathological sampling as a means of diagnosis.

** Please refer to the IFU for compatible devices.

- Specialties
- Core Platform Configuration
- Upgrades



Software Upgrades and Future Innovations

Optimized Investment Tailored to Your Needs

Innovation That Grows With You

Enter the next generation of surgical imaging
with scalable software upgrades now.



- **No need to switch** to another platform in the future to access new technologies.
- Stay up to date with the **latest imaging advancements**
- **Upgrade functionalities like 3D** to align with your individual hospitals evolving needs via a simple **software activation**.
- **Optimize costs and maximize efficiency**—pay only for what you need with a scalable surgical imaging platform.*
- Leverage your existing fleet of ENDOEYE™ Videoscopes with improved image processing on a 4K platform featuring backward compatibility. No need to upgrade until you want to**

*Data on file with Olympus as of 04/2025.

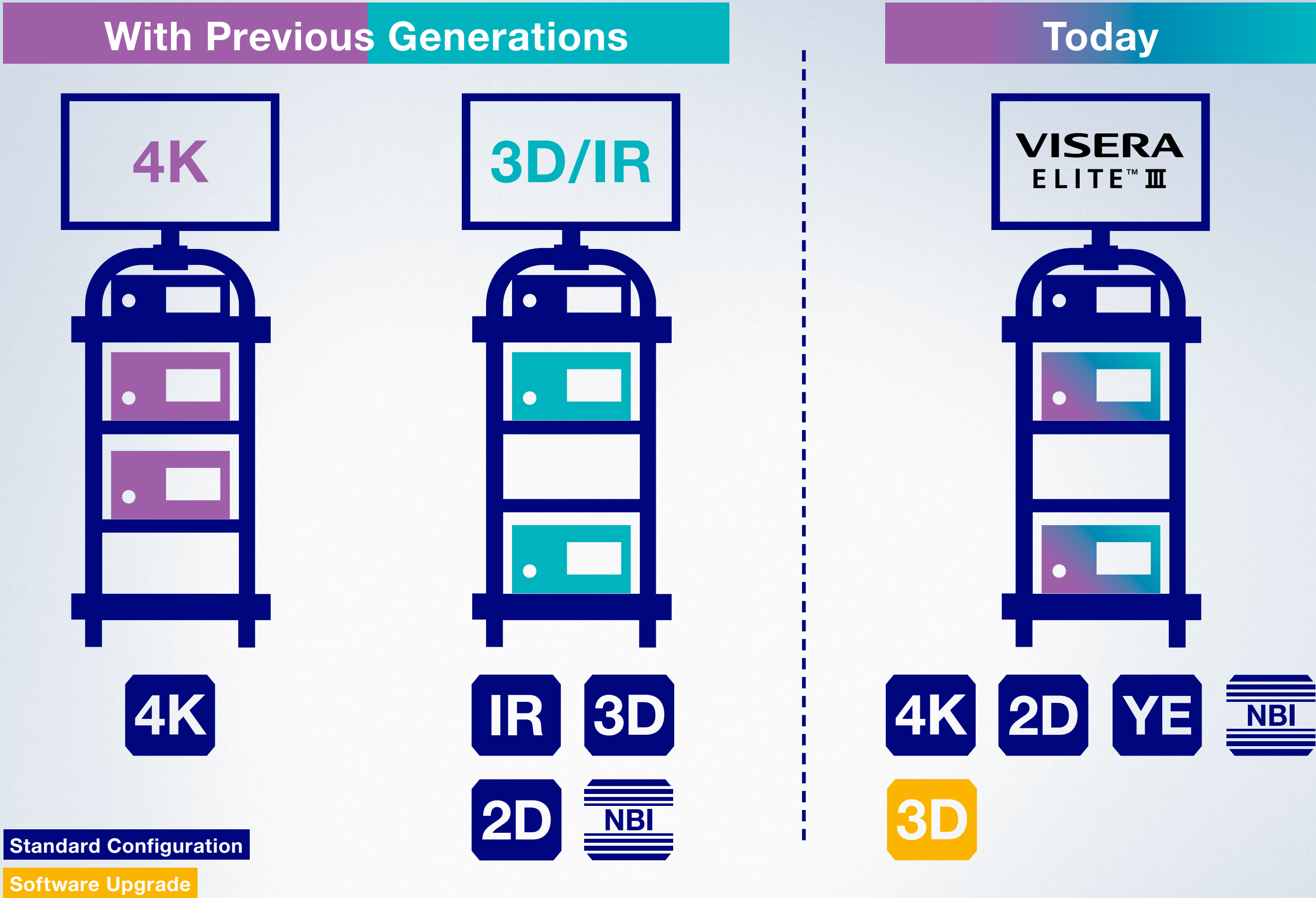
**See Instructions for Use (IFU) for the full list of compatible videoscopes and camera heads.

Optimized Individual Investments

Optimized Investment Tailored to Your Needs

An Optimized Investment Tailored to Your Needs

Designed to support multiple surgical specialties, the VISERA ELITE™ III Surgical Imaging Platform offers flexibility to adapt to evolving OR needs. Instead of investing in a full system upfront, hospitals can activate selected upgrades via software licensing when needed—helping to streamline workflows and minimize OR downtime for the upgrade process.



Lean but Cost-efficient Investments

Due to a broad portfolio of compatible scopes, future-ready software upgrades, and integrated 4K, 3D, NBI™, and YE technologies—all within a single multispecialty surgical imaging platform.

See Sharper in 4K

Advancing Surgical Visualization

Never Lose Focus

Experience sharp images through True 4K CMOS sensor and constantly keep the focus with Continuous Auto Focus (CAF) Function.



True 4K image quality

The exclusive 4K image sensor from Sony produces true 4K image quality, enabling the camera head to deliver fine detail and clarity for the most intricate procedures.



Continuous Auto Focus (CAF)

The CAF function maintains constant focus, eliminating the need for manual adjustments and it is designed to support surgeon comfort and reduce fatigue throughout the surgery.*



Extended Depth of Field (EDOF)

The EDOF technology facilitates endoscopic observations through continuous broad focus and enhanced depth of field allowing more of the image to be in focus at once.**

* Based on surgeons' survey results. N=9 Data on file with Olympus (DC00677791).

**Data on file with Olympus as of 04/2025.

See Sharper in 4K

Advancing Surgical Visualization

Focus on the Patient

Relieve stress and feel comfortable during surgery to fully focus on your procedure. The **Continuous Auto Focus (CAF) and Extended Depth of Field (EDOF)** technology are designed to provide depth perception in 4K image quality and lessen surgeon fatigue during the procedure.*

CH-S700-XZ-EA

4K Camera Head

- True 4K CMOS Image Sensor.
- Small and light autoclavable design: 270 g.
- Narrow Band Imaging™ (NBI™) technology and Yellow Enhancement (YE) visualization mode observation featured.
- One-touch digital zoom and continuous auto focus activation.



* Compared to our conventional product DATA, N=9 Data on file with Olympus (DC00677791).

Observe More

Advancing Surgical Visualization

VISERA ELITE™ III surgical imaging platform is designed to enhance surgical visualization. Benefit from **Narrow Band Imaging™ (NBI™) technology**,* a feature that visualizes minor vascular structures** and **Yellow Enhancement (YE)**, which may distinguish between fatty tissue and other structures.

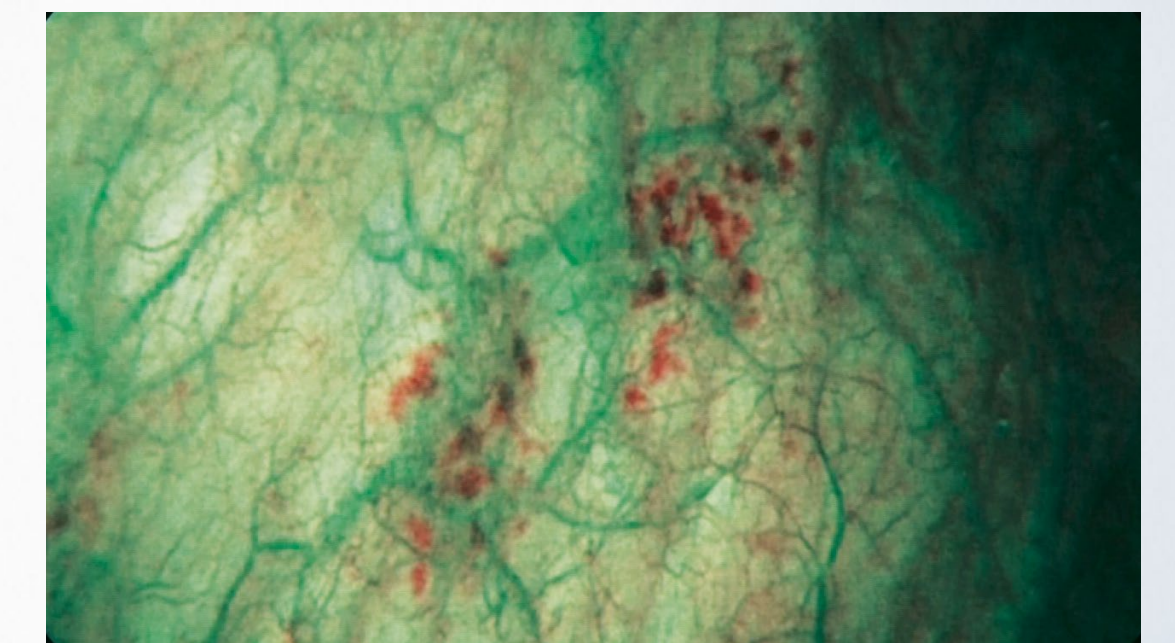


Narrow Band Imaging Technology

NBI technology is a patented optical filter technology that **enhances the visibility of vascular and mucosal structures** in the bladder using only those wavelengths highly absorbed by hemoglobin. That is why NBI technology achieves contrast, thus revealing more details of the examined tissue than white-light imaging (WLI).*



White light



NBI light

*NBI technology is not intended to replace histopathological sampling as a means of diagnosis.

**Data on file with Olympus as of 09/2019.

Observe More

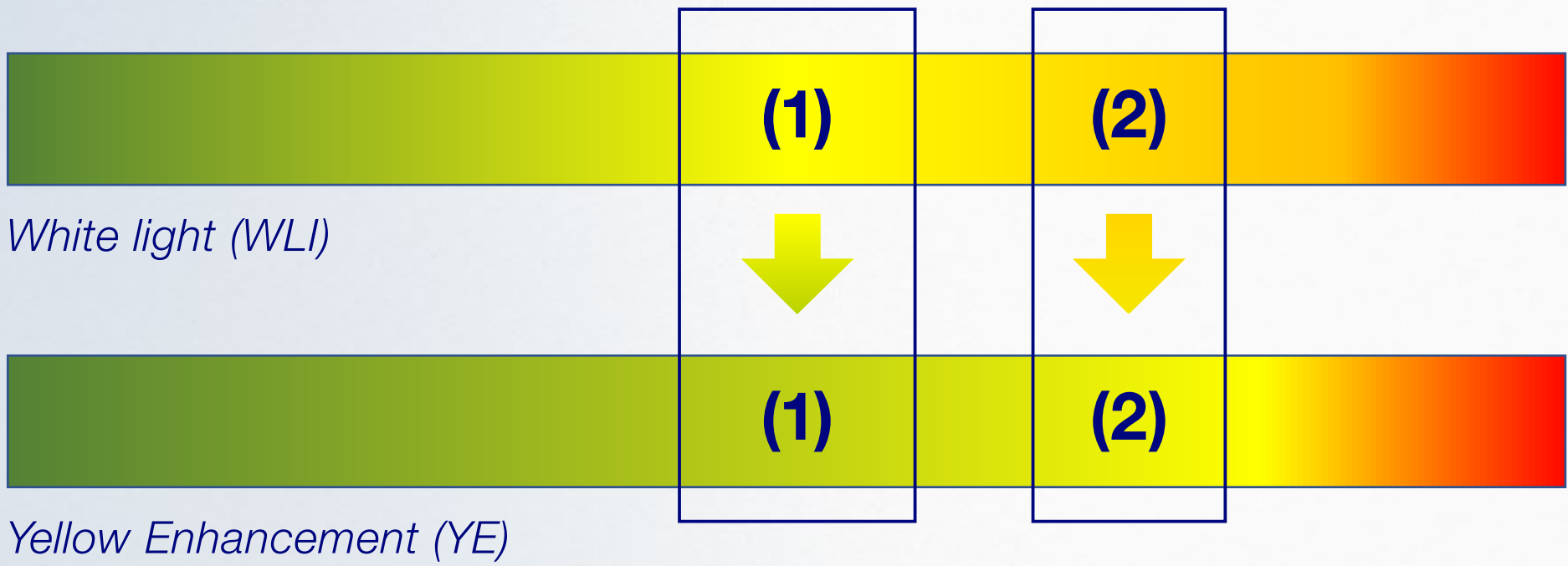
Advancing Surgical Visualization



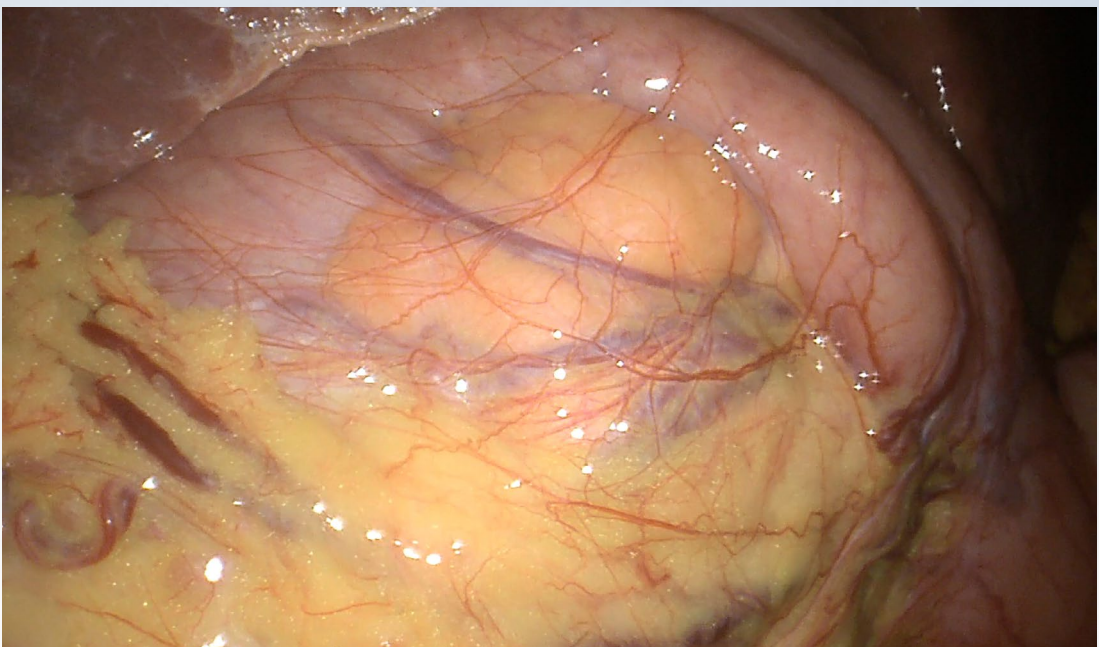
Yellow Enhancement

Yellow Enhancement (YE) is a default function with VISERA ELITE™ III Surgical Imaging Platform. It is **designed to enhance the difference in visualization of material that contains yellow versus material that does not.** This is done by color conversion of orange material to appear as enhanced yellow.

Principle of Yellow Enhancement (YE) Observation***



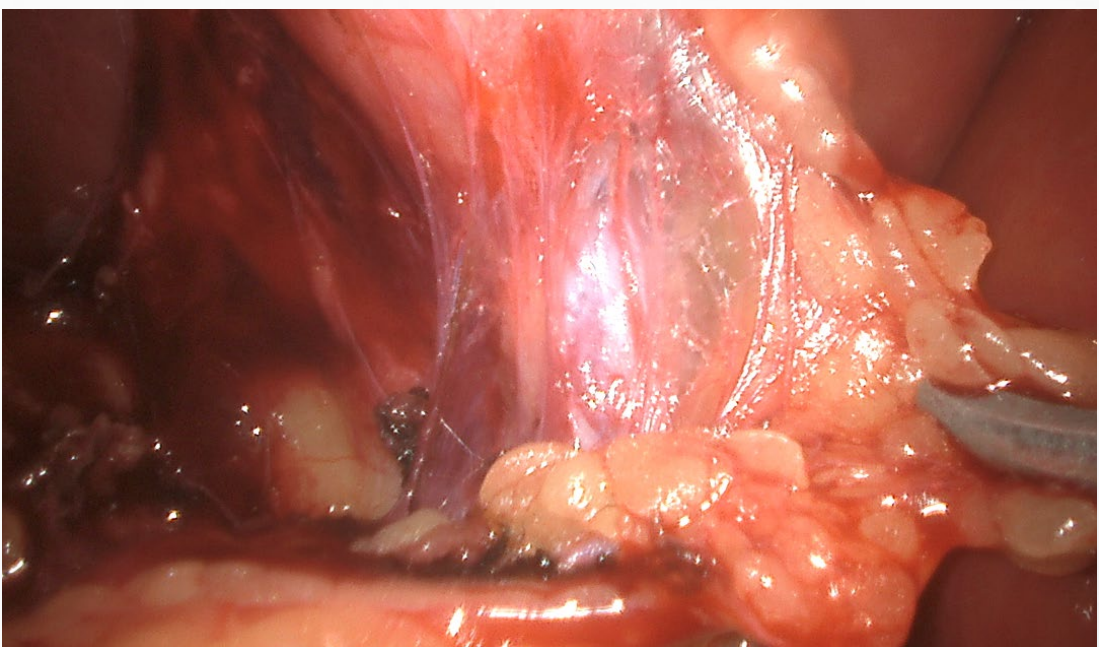
- **White Light (WLI)** - (1) Yellow (2) Orangish yellow, Orange (Beta-carotene)
- **Yellow Enhance (YE)** - (1) Green (2) Yellow



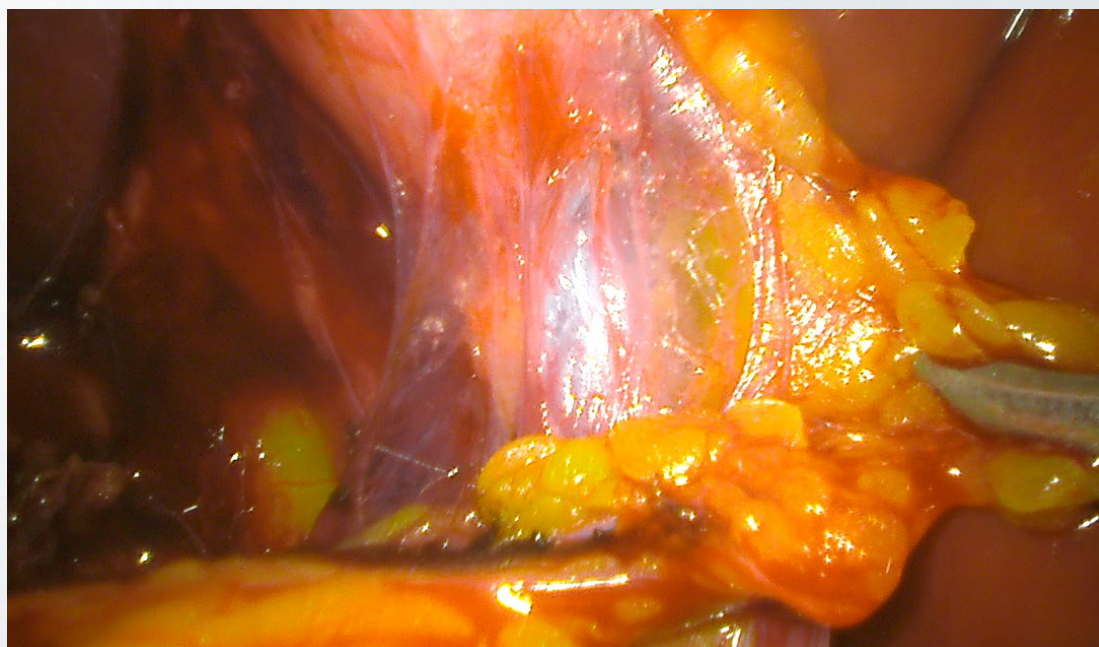
White light*



Yellow Enhancement*



White light**



Yellow Enhancement**

In the images above, fatty tissue appears yellow under Yellow Enhancement (YE) mode while surrounding structures remain unchanged. This visualization is related to the presence of beta-carotene in fat, which is the only material in the abdominal cavity containing yellow.

* Image courtesy of Luigi Boni, MD, a paid consultant for Olympus.
** Images courtesy of Natan Zundel, MD, a paid consultant for Olympus.

Discover Natural 3D

Advancing Surgical Visualization

3D imaging can go beyond the limits of what traditional endoscopes can see.

Olympus® 3D systems have been shown to offer enhanced depth perception and a precise spatial view of anatomy that simply cannot be achieved with traditional 2D systems*

3D imaging provides:*



Enhanced Depth Perception*



Improved Speed**



Improved Accuracy & Precision**

* Gabrielli M, et al "Assessment of 3-Dimensional vs 2-Dimensional Imaging and Technical Performance Using a Multiport Intraoperative Data Capture and Analytic System for Patients Undergoing Laparoscopic Roux-en-Y Gastric Bypass Surgery" JAMA Netw Open 2020; DOI: 10.1001/jamanetworkopen.2019.20084.

** Data on File with Olympus as of April 2020. "Claims based on one study." See page 33 for risk statement.

ENDOEYE™ Rigid Videoscope

Change the direction of view while maintaining a stable horizon. ENDOEYE Rigid 30° videoscopes support your continuous critical view and is designed to provide you with reliable orientation, even at challenging viewing angles, with its continuous mechanical rotation function.

ENDOEYE – 2D/3D Videoscopes

One-handed Image Rotation without Loss of Horizon

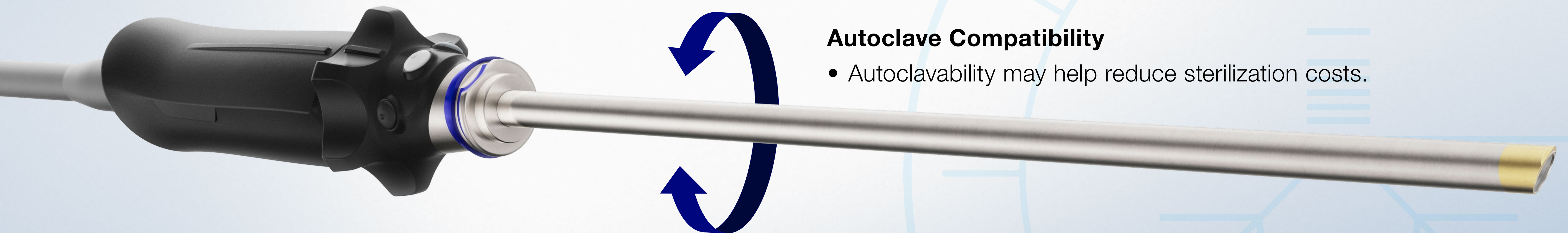
- Change of the view direction while maintaining horizontal orientation of images, enabling a continuous critical view.
- Drive the scope and change view direction with one hand, freeing up a surgical assistant's hand for grasping or other tasks.

Fog-free, Chip-on-the-tip Technology

- Bright, clear and natural 3D depth perception.
- Focus-free handling; no manual focusing required.
- Fog-free element in 10 mm scopes reduces scope fogging.

Autoclave Compatibility

- Autoclavability may help reduce sterilization costs.



The ENDOEYE videoscope has been designed to be used within the thoracic and abdominal cavities including female reproductive organs. This instrument must not be used for observation or treatment of the heart and must not contact the heart or any area near the heart or contact any device or therapeutic accessory that contacts the heart or any area near the heart. Do not use this instrument for any purpose other than its intended use.

Advanced Video Laparoscopy

Advancing Surgical Visualization

ENDOEYE™ FLEX Videoscope

Easily shift the field of view with ENDOEYE FLEX videoscope 5 mm and 10 mm by controlling the tip up to 100 Degrees of Angulation to the desired location. With access to narrow cavities, obtain a clear viewing angle of structures in areas such as the rectum, VATS procedures, pelvic cavity, retroperitoneal approach to urology, etc.

Autoclave Compatibility

- Autoclavability may help reduce sterilization costs.

Lightweight Design

- Designed for comfort and smooth handling.

Focus-free Handling

- No need for manual focusing.

The ENDOEYE videoscope has been designed to be used within the thoracic and abdominal cavities including female reproductive organs. This instrument must not be used for observation or treatment of the heart and must not contact the heart or any area near the heart or contact any device or therapeutic accessory that contacts the heart or any area near the heart. Do not use this instrument for any purpose other than its intended use.



100° of Articulation
in All Directions

A Wider Ecosystem with Energy Solutions

Beyond Visualization: See. Treat. Connect™. with Olympus.

Part of a Wider Ecosystem of Surgery...

Our wider portfolio for surgery covers generators, hand instruments for multiple specialties, smoke-management solutions, and puts the power of choice in your hands for advanced energy devices.

Advanced Bipolar Energy **POWERSEAL™ SEALER/DIVIDER**

Secured vessel sealing throughout the procedure.*

Hybrid Energy **THUNDERBEAT™ PORTFOLIO**

Advanced bipolar sealing, efficient ultrasonic transection, and precise dissection.**

Ultrasonic Energy **SONICBEAT™ PORTFOLIO**

Efficient tissue transection, blunt and fine dissection, and secure grasping.***

Our wider portfolio equips you with the power to choose..

Benefit from:

- Streamlined efficiency with an all-in-one energy source.
- The power to choose which solutions fit your surgical needs.
- Products designed to support clinical performance.



* Data on file with Olympus (DN0044249, DN0056240, DN0056242)

** Data on file with Olympus as of 08/2017

*** Data on file with Olympus as of 01/2012

A Wider Ecosystem with Collaboration and Integration

Beyond Visualization: See. Treat. Connect™. with Olympus.

... Collaboration and Integration

Integrate content management and collaboration platforms with VISERA ELITE™ III surgical imaging platform as part of a wider ecosystem that support clinicians like you at every step.

Connect

- **nCare™ 4K Medical Recorder** - Hospital-wide medical recorder.
- **Proximie Virtual Clinical Collaboration** - Telecollaboration solution.
- **VaultStream™ Server** - Medical Content Management solution.

View, record, stream, annotate, label and edit surgical video information pre-, intra- and post-operatively. These system extensions can use patient data from HIS and PACS systems to enhance visual clinical insights.

Benefit from:

- Connecting teams by simplifying collaboration.
- Peer-to-peer live exchanges of second opinions supporting clinical decision-making.
- The possibility of broadcast training.



Core Products

VISERA ELITE™ III Surgical Imaging Platform Product Overview

OTV-S700 – VISERA ELITE III Surgical Imaging Platform

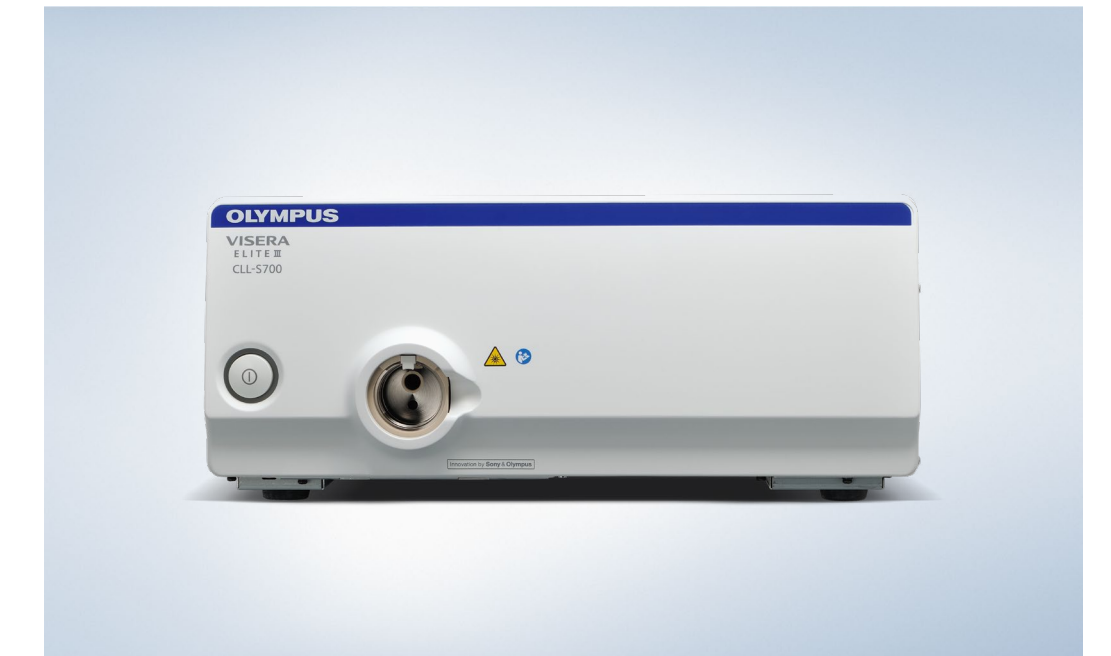
- All-in-one 4K/3D imaging system for high standardization.
- Customized functions can be upgraded via software upgrades.
- For multiple specialties, compatible with the latest generation of scopes.
- Backward compatibility* with available scopes.



OTV-S700

CLL-S700 – VISERA ELITE III Surgical Imaging Platform LED Light Source

- Full color LED light source for natural color reproduction.
- Long-life LED bulbs for reducing operating costs.



CLL-S700

Software Upgrade Activation USB Memory Key

- Scalable software upgrade
- Easy and quick upgrades can be done on-site.



MAJ-2511

CH-S700-XZ-EA – 4K Camera Head

- 4K CMOS sensors.
- Continuous Auto Focus (CAF) designed to minimize distractions.
- Extended Depth of Field (EDOF Technology) to facilitate endoscopic observations through dual focus and enhanced depth of field.
- Autoclave compatibility for cost-effective reprocessing.
- Lightweight of only 270 g.
- Supports NBI™ technology.



CH-S700-XZ-EA

* Please refer to the IFU for compatible devices.

Core Products

VISERA ELITE™ III Surgical Imaging Platform Product Overview

Sony LMD-XH320ST/550ST 4K, 3D Medical LCD Monitor

- Available in 32-inch and 55-inch.
- High-quality 4K UHD video images in 3D and 2D.
- High brightness and high contrast.
- Clone output.
- Advanced image multiple enhancer (A.I.M.E).
- 12G-SDI, 3G-SDI, & HDMI Compatible.



Sony LMD-XH320ST/550ST

ENDOEYE™ Rigid 3D/2D (0°/30°, 10 mm/5 mm)

- (3D) image rotation without loss of horizon to maintain a reliable orientation.*
- Chip-on-tip technology for bright, clear and natural 3D depth perception.*
- Focus-free, no manual focusing required.
- Autoclave compatibility for cost-effective reprocessing.



WA50080A, WA50082A, WA50040A,
WA50042A, WA50050A, WA50052A

ENDOEYE™ FLEX Videoscope

- Access to narrow cavities with the flexible tip.
- Focus-free, no manual focusing required.
- 100° of articulation.



LTF-S190-5, LTF-S190-10

Insufflation Intra-abdominal Insufflation Unit (UHI-4)

- The Olympus® UHI-4 Intra-abdominal Insufflation Unit is designed to insufflate the abdominal cavity during diagnostic and operative laparoscopic procedures. The system also includes smoke evacuation functionality and a small cavity mode. Automatic smoke evacuation is available when used in combination with Olympus® ESG or USG electrosurgical generators.



UHI-4

The ENDOEYE videoscope has been designed to be used within the thoracic and abdominal cavities including female reproductive organs. This instrument must not be used for observation or treatment of the heart and must not contact the heart or any area near the heart or contact any device or therapeutic accessory that contacts the heart or any area near the heart. Do not use this instrument for any purpose other than its intended use.

*3D only with 3D ENDOEYE

Core Products

VISERA ELITE™ III Surgical Imaging Platform Product Overview

ULTRA™ Telescopes (0°/30°/45°, 5 mm/10 mm)

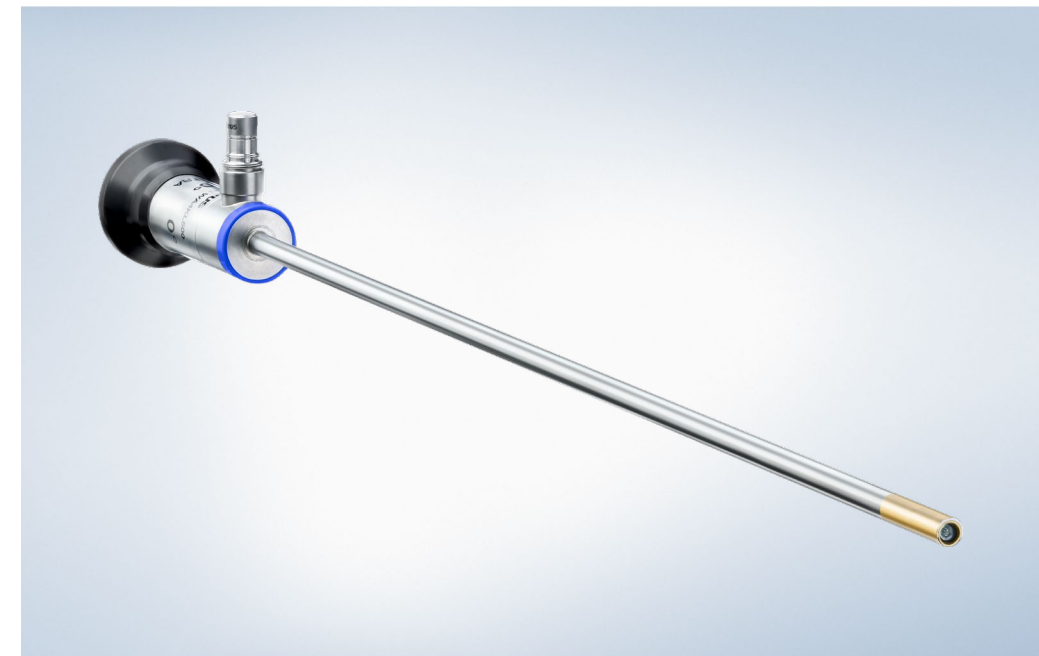
- Optimized for Ultra-high-Definition imaging.

Full autoclavability

- Reduced waste due to full reusability of the telescopes.

High illumination even at the edges

- The ULTRA telescopes have a homogenous light distribution in the peripheral region.



WA4KL500, WA4KL530, WA4KL545,
WA4KL100, WA4KL130, WA4KL1

ZEROWIRE® G2

Advanced Wireless HD-Video Transmission System

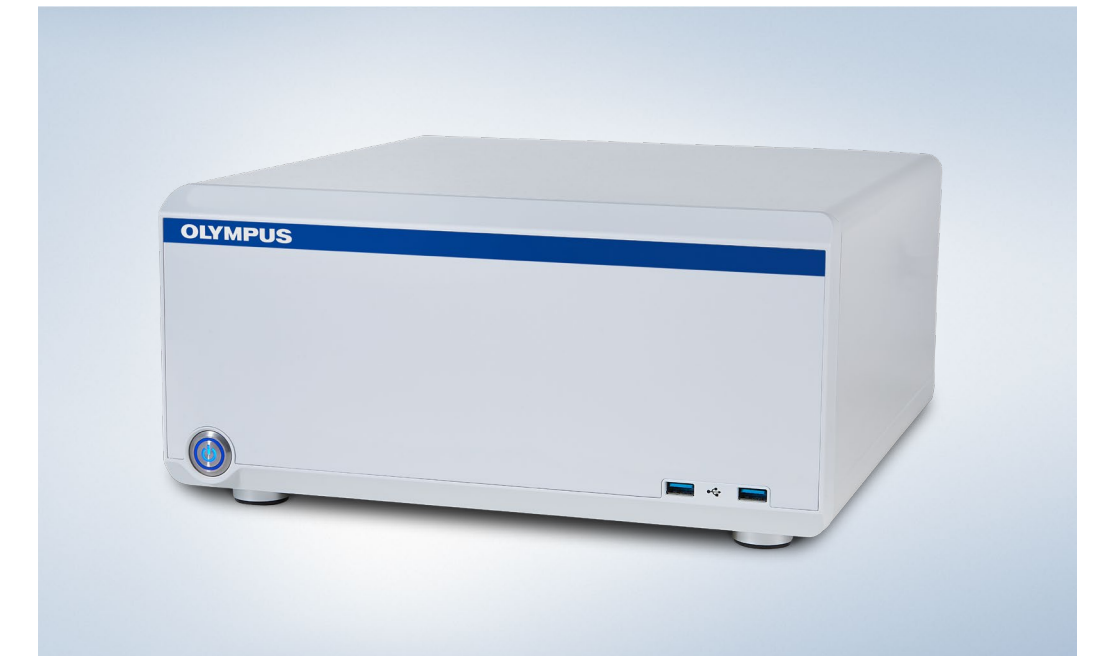
- ZeroWire G2 was designed to reduce cable clutter in the operating room and wirelessly route images to a secondary display.



IS40123, IS40124, IS40125, IS40126,
IS20303, IS20304

nCare™ 4K Medical Recorder Secure and Intuitive Design to Support Health Care Teams

- The nCare 4K recorder is a network connected medical recorder that can capture 4K and/or HD images and videos from up to two devices simultaneously.
- The nCare 4K recorder easily, reliably and securely connects clinicians with the critical visual information they need at all times via our Enterprise Grade VaultStream Server. Wirelessly access images anywhere on any device on the hospital network.
- The vendor-neutral, secure, scalable, and user-friendly solution can fit nearly anywhere, from an endoscopic cart to an equipment boom.

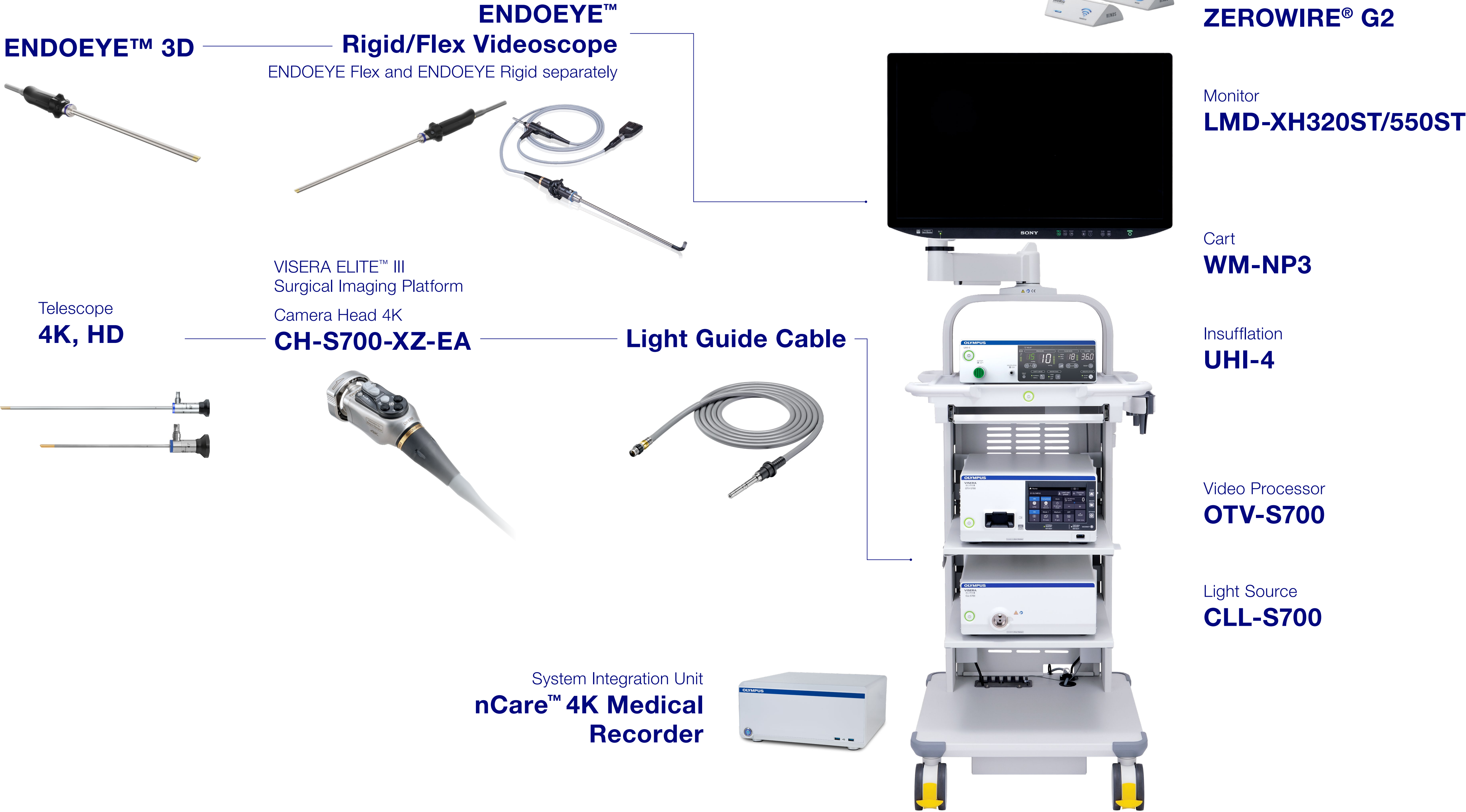


ISM-1200389, ISM-1200413, ISM-1200414,
ISM-1200415, ISM-1200416, ISM-1200417

Video recordings and images captured by the nCare Medical Video Recorder and sent to the Electronic Health Record systems by the VaultStream server software are only intended for documentation of medical surgical procedures and are NOT to be used for diagnosis or treatment.

System Chart

VISERA ELITE™ III Surgical Imaging Platform Product Overview



Technology That Powers Your Vision



Discover More about VISERA ELITE™ III Surgical Imaging Platform

If you require more specific details about the system and its benefits, need detailed information on product and components, or want to download individual product specification documents, please visit the Olympus website

The VISERA ELITE III Surgical Imaging system is a compact, multispecialty imaging platform designed for laparoscopic diagnosis, treatment, and video observation. TYPE BF endoscopes connected to this imaging system must never be applied directly to the heart. Leakage current from the TYPE BF applied part may be dangerous and cause ventricular fibrillation or otherwise seriously affect the cardiac function of the patient. For cardiac procedures please use CF Rated cameras such as the CH-S700-XZ-EA and ENDOEYE HD II.

Manufactured by OMSC Olympus Medical Systems Corporation - 2-43-2 Hatagaya, Shibuya-ku, Tokyo 151-0072, Japan.
Specifications, design and accessories are subject to change without any notice or obligation on the part of the manufacturer. Olympus is a registered trademark of Olympus Corporation, Olympus America Inc., and/or their affiliates. I Medical devices listed may not be available for sale in all countries.



OLYMPUS AMERICA INC.

3500 Corporate Parkway, PO BOX 610, Center Valley, PA 18034

For more information, contact your Olympus sales representative, or call 800-848-9024.
www.medical.olympusamerica.com
©2025 Olympus America Inc. All rights reserved.
OAISS0425BRO56170