

MedPresence® on EasySuite 4K or Standalone Cart
Quick Reference Guide
For the In-room Participant

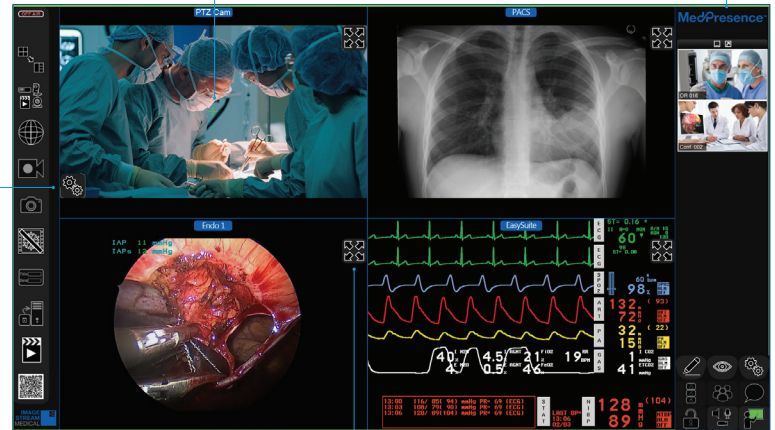


User Interface

A. MedPresence Application Info: Clicking and holding the MedPresence logo will display information regarding the version of MedPresence.

B. PTZ Camera Tile: Touching the tile controls pan and tilt of the camera. Control speed is proportional to distance from the center of the tile.

C. PTZ Settings: Displays PTZ camera presets and zoom controls.



D. On Air Indicator: Indicates whether a MedPresence session is active. Provides “Network Strength” indicator, and indicates status of different MedPresence features.

E. Sources: Enables users to select a video source to populate a tile with. Select the source button and then select the intended tile.

F. Web Browser: Starts a web browser session.

G. Image Capture: Saves a snapshot image of the screen.

H. Edit Recording Information: Provides the user with the ability to add a title and other metadata to the session.

I. EasyView®: Launches a VaultStream® EasyView session.

J. Fullscreen: Displays the associated tile in full screen.

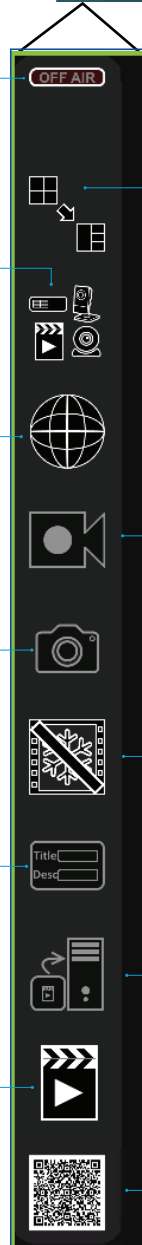
K. Layouts: Displays pre-configured tile layouts. Select a layout to change the way the tiles are arranged.

L. Record: Creates a recording of the current session which can be saved to the non-clinical Inservice library. Center of icon turns red when recording is activated.

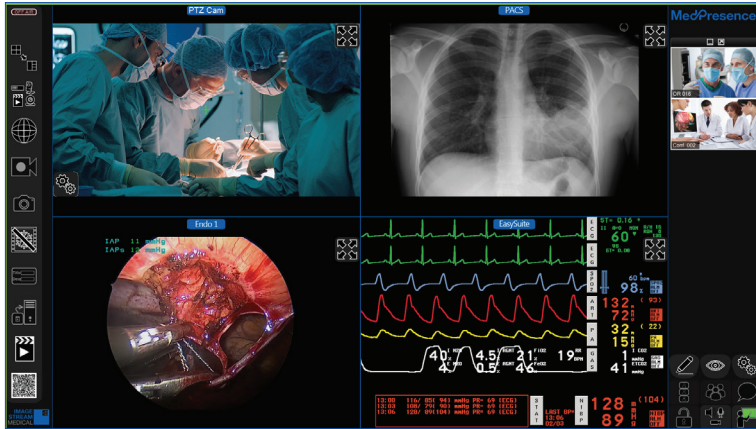
M. Freeze Video: Freezes what is being displayed on the screen.

N. Save And Submit: Saves the session data and closes the session. *When the session is terminated by the user, recordings are automatically saved.*

O. QR Code (Secure Invite): Provides users with the ability to send a 3rd party user (e.g., visiting physician) an invitation to a MedPresence session.



User Interface (continued)



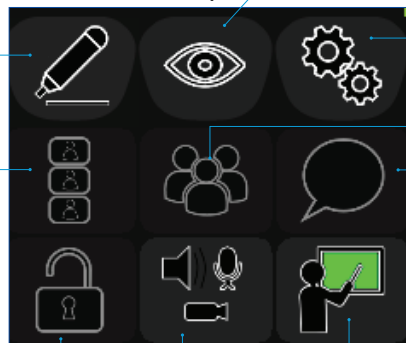
T. Video Stream: Displays video streams of each participant.
Typically, a remote user will request remote control of the MedPresence user interface. In some cases, this will create a popup for the local user to accept in order to grant remote access.

P. Annotate: Displays tools for adding graphical elements to the screen..

Q. Active Speaker: Provides the user with the ability to specify whether to show all video streams of those taking part in the session or only the Active Speaker's video stream. Users may also view the Active Speaker's video stream at maximum size.

R. Lock: Locks the session to prevent others from joining.

S. Privacy: Enables "Privacy" by stopping video and audio flow from the session.



U. PHI Masking: Provides users with the ability to hide Personal Healthcare Information (PHI).

V. Settings: Provides access to system settings.

W. Manage Participants: Provides a list of other session participants and allows in-room users to mute or remove individual remote participants.

X. Chat: Send and receive messages between session participants.

Y. Start/End Session: Begins or ends a MedPresence session that others are able to join. Users only need to select the green "Start Session" button in order to initiate a session. The button will display olive while connecting and red once the connection has been established.

Starting/Ending A Session



Press the green "Start/End Session" icon in the lower right hand side of the MedPresence user interface (Y) to begin a session.



The "Start/End Session" button turns red while the session is active and terminates the active session when pressed.

Inviting A Remote Guest

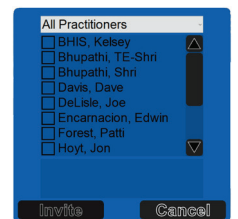
Select the "QR Code" button. (O)



The QR code palette will be displayed. Now, select the "invite others" button.



The secure invite field will open, allowing you to select the individuals you would like to include by clicking the "invite" button.



Setting Privacy



Use the "Privacy" button in the lower right hand side of the MedPresence user interface (S) to toggle enable/disable patient privacy.

Audio and video are accessible (top), when privacy is disabled. Pressing the icon in this state will enable privacy.



When privacy is enabled, audio and video are not streamed from the room. Press again to disable.

Selecting Sources



Select the "Source" icon. (E)



Then, select a source from the available options.

Select the MedPresence video tile you intend to route video to.

This guide is designed as a quick reference guide only. It is not a substitute for reading and learning the entire Operators Manual and/or Instructions For Use (IFU) provided with the MedPresence 10.3 Software User Guide. Olympus cannot encourage or recommend any actions that deviate or are not covered by the IFU.

Manufactured by Image Stream Medical, One Monarch Drive, Littleton, MA 01460 USA medical.olympusamerica.com/olympus-systems-integration.

Specifications, design and accessories are subject to change without any notice or obligation on the part of the manufacturer.

Olympus is a registered trademark of Olympus Corporation, Olympus America Inc., and/or their affiliates. | Medical devices listed may not be available for sale in all countries.



OLYMPUS AMERICA INC.
3500 Corporate Parkway, PO BOX 610, Center Valley, PA 18034

For more information, contact your Olympus sales representative, or call 800-548-5515.
www.medical.olympusamerica.com

©2020 Olympus America Inc. All rights reserved.
Printed in USA OASIO320QRG34656