

**OLYMPUS**<sup>®</sup>

Your Vision, Our Future

EVIS EXERA II GASTROINTESTINAL VIDEOSCOPE

**OLYMPUS GIF TYPE Q180**

EVIS  
**EXERA II**



*Outstanding image quality  
and performance  
in a slim, 8.8 mm diameter scope*



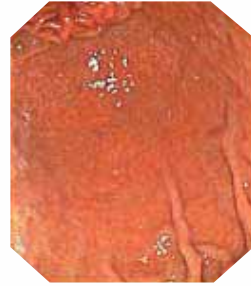
Combining high quality image with a slim design, this scope is ideal for a wide range of applications in the upper gastrointestinal tract from observation to treatment.

Image quality without compromise — the GIF-Q180 measures only 8.8 mm along the entire insertion tube. This slim design allows smooth insertion into the upper gastrointestinal tract. At the same time, you will enjoy brilliant images that are clear and sharp from edge to edge and displayed on the monitor in a large display size. Versatility and state-of-the-art image resolution combine to make this the ideal solution for today's most exacting procedures.



■ Clear, sharp images with large image capability

Dynamic images with excellent detail, while the larger display size makes for optimum observation.



■ Slim 8.8 mm diameter distal end and insertion tube

The GIF-Q180 measures just 8.8 mm in diameter at both the distal end and along the insertion tube. Improved insertion capability may make this scope easier for patients to tolerate and easier for physicians to maneuver.



■ Generous 2.8 mm diameter instrument channel

Despite the reduction in the scope's outer diameter, the GIF-Q180's instrument channel has a diameter of 2.8 mm, which can easily accommodate a wide range of endotherapy accessories.



■ Easy endoscopy suite management and future expansion

The GIF-Q180 incorporates a memory chip to store scope information such as model number, serial number, basic specifications, and white balance setting. This also makes the scope ready for next-generation system expansion.

## Main Features

- Outstanding image quality with crisp, clear images and life-like color rendition in an easy-to-view large display size.
- NBI function is available in combination with the CV-180 and CLV-180.
- Slim design: 8.8 mm diameter along the entire insertion tube for improved insertion capability.
- A 2.8 mm diameter instrument channel ensures that a wide range of endotherapy accessories can be used.
- Four-way angulation (210° up, 90° down, and 100°right/left) enables complete and comprehensive observation within the upper gastrointestinal tract.
- Extra-wide 140° field of view enables observation of a wide area.
- Ergonomically designed grip enhances scope maneuverability while easy-to-access controls and user programmable switches improve operability.
- Fully compatible with the CV-180/160/140.

- Scope ID function stores individual scope information in the built-in memory chip and displays it on the monitor, facilitating endoscopy suite management.

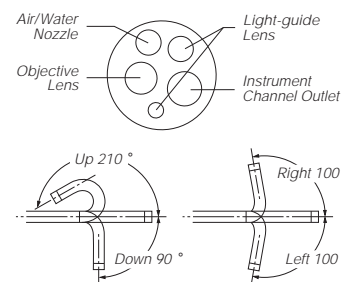


Start-up display



## Specifications

Optical System	Field of view	140 °
	Direction of view	Forward viewing
	Depth of field	3 to 100 mm
Distal End	Outer diameter	8.8 mm
Insertion Tube	Outer diameter	8.8 mm
Bending Section	Angulation range	Up 210 ° Down 90 ° Right 100 ° Left 100 °
Working Length		1030 mm
Total Length		1345 mm
Instrument Channel	Inner diameter	2.8 mm
	Minimum visible distance	3 mm from the distal end
	Endotherapy accessory entrance/exit position in field of view	



Specifications, design and accessories are subject to change without any notice or obligation on the part of the manufacturer.

**OLYMPUS MEDICAL SYSTEMS CORP.**  
Shinjuku Monolith, 3-1 Nishi-Shinjuku 2-chome, Shinjuku-ku, Tokyo 163-0914, Japan  
**OLYMPUS MEDICAL SYSTEMS EUROPA GMBH**  
Postfach 10 49 08, 20034 Hamburg / Wendenstrasse 14-18, 20097 Hamburg, Germany  
**OLYMPUS AMERICA INC.**  
3500 Corporate Parkway, P.O. Box 610, Center Valley, PA 18034-0610, U.S.A.  
**OLYMPUS LATIN AMERICA, INC.**  
5301 Blue Lagoon Drive, Suite 290 Miami, Florida 33126-2097, U.S.A.  
**KEYMED LTD.**  
Keymed House, Stock Road, Southend-on-Sea, Essex SS2 5QH, England

**OLYMPUS SINGAPORE PTE LTD.**  
491B River Valley Road #12-01/04, Valley Point Office Tower, Singapore 248373  
**OLYMPUS HONG KONG AND CHINA LIMITED**  
Room 1520-1527, Ocean Centre, 5 Canton Road, Tsimshatsui, Kowloon, Hong Kong  
**OLYMPUS (BEIJING) SALES & SERVICE CO., LTD.**  
Room.1202, NCI Tower, A12 Jianguomenwai Avenue Chaoyang District Beijing, 100022, China  
**OLYMPUS MOSCOW LIMITED LIABILITY COMPANY**  
117071, Moscow, Malaya Kaluzhskaya 19, bld. 1, fl.2, Russia  
**OLYMPUS AUSTRALIA PTY LTD**  
31 Gilby Road, Mount Waverley, VIC., 3149, Australia

www.olympus.com

Printed in Japan F1126SB-0806