

OLYMPUS®

Your Vision, Our Future



GIF-H180J

GASTROINTESTINAL VIDEOSCOPE

Life-like HDTV imaging plus convenient auxiliary water channel in a slim scope — less than 10 mm in diameter.

GIF-H180J

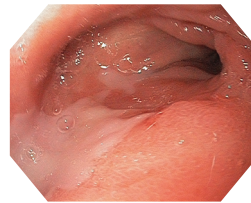
GASTROINTESTINAL VIDEOSCOPE

Experience the best performance in routine upper gastrointestinal endoscopy available today from Olympus.

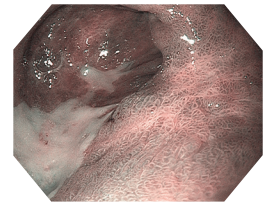
Now you can perform routine upper gastrointestinal endoscopy with the added clarity of HDTV imaging supported by an auxiliary water jet function. Setting a new standard in routine endoscopy, this scope incorporates all of the most advanced features available today, ranging from its convenient auxiliary water channel and slim insertion tube measuring just 9.9 mm in diameter to its high-resolution HDTV imaging with NBI capability and Close Focus.

Features and Benefits

- HDTV-compatible CCD chip delivers the sharpest images to help physicians provide accurate screening and diagnoses.
- Close Focus for detailed observation without electronic magnification.
- Narrow Band Imaging™ enhances observation of capillary and mucosal structures.
- Auxiliary water channel flushes out blood and mucus inside the upper gastrointestinal tract, helping to ensure a clear view at all times.
- Slim design with a 9.9 mm diameter distal end and insertion tube for excellent insertion capability.
- A wide range of instruments can be used with the 2.8 mm diameter channel.
- Four-way angulation enables comprehensive examination of the upper gastrointestinal tract.
- Extra-wide 140° field of view enables observation of a wide area with less movement.



HDTV white light image



NBI image

Specifications

Optical System	Field of view	140°
	Direction of view	Forward viewing
	Depth of field	2 to 100 mm
Distal End	Outer diameter	9.9 mm
Insertion Tube	Outer diameter	9.9 mm
Bending Section	Angulation range	Up 210°, Down 90°, Right 100°, Left 100°
Working Length		1,030 mm
Total Length		1,345 mm
Instrument Channel	Inner diameter	2.8 mm
	Minimum visible distance	3 mm from the distal end
	Endotherapy accessory entrance/exit position in field of view	



For more information or to arrange a demonstration, contact your local Olympus sales representative, or call **800-848-9024**.

www.olympusamerica.com/gif

OLYMPUS

0AIGI0410BR06575

© 2010 Olympus America Inc. All rights reserved.