

Full line of fibers complement your laser technique

- Comparable performance and product offering to competitive fibers²
- Compatible for use on EMPOWER Holmium or other Ho: YAG laser systems



The EMPOWER ball tip fiber allows you to maintain visualization of a stone as the fiber is inserted

Make the optimal choice to meet your lithotripsy needs

ORDERING INFORMATION

LASER SYSTEMS

PART NUMBER	DESCRIPTION
EMP-H35S	EMPOWER 35-Watt Ho:YAG laser system
EMP-H65S	EMPOWER 65-Watt Ho:YAG laser system

SINGLE-USE LASER FIBERS

(PACK OF 5) - FOR USE WITH EMPOWER LASERS

PART NUMBER	DESCRIPTION
EMP-FBX200BHS	200 series ball-tip laser fiber, single-use, 5/box
EMP-FBX200HS	200 micron single-use laser fiber, 5/box
EMP-FBX272HS	272 micron single-use laser fiber, 5/box
EMP-FBX365HS	365 micron single-use laser fiber, 5/box
EMP-FBX550HS	550 micron single-use laser fiber, 5/box
EMP-FBX1000HS	1000 micron single-use laser fiber, 5/box

REUSABLE LASER FIBERS

(PACK OF 5) - FOR USE WITH EMPOWER LASERS

PART NUMBER	DESCRIPTION
EMP-FBX200HR	200 micron reusable laser fiber, 5/box
EMP-FBX272HR	272 micron reusable laser fiber, 5/box
EMP-FBX365HR	365 micron reusable laser fiber, 5/box
EMP-FBX550HR	550 micron reusable laser fiber, 5/box
EMP-FBX1000HR	1000 micron reusable laser fiber, 5/box

LASER FIBERS

(PACK OF 5) - FOR USE WITH OTHER Ho:YAG LASERS

PART NUMBER	DESCRIPTION
EMP-FBX200BHS-C	200 series ball-tip laser fiber - compatible, single-use, 5/box
EMP-FBX272HS-C	272 micron single-use laser fiber - compatible, 5/box
EMP-FBX272HR-C	272 micron reusable laser fiber - compatible, 5/box

For laser fibers of micron size 365, 550 and 1000, fiber products listed above are compatible with other Ho:YAG lasers.

ACCESSORIES

PART NUMBER	DESCRIPTION
EMP-A200FS	Stripper for 200-272 micron laser fibers
EMP-A365FS	Stripper for 365-400 micron laser fibers
EMP-A550FS	Stripper for 550-600 micron laser fibers
EMP-A1000FS	Stripper for 1000 micron laser fibers
EMP-AFCC	Ceramic cutter for laser fibers
EMP-AHFS1	EMPOWER H35W holmium laser footswitch
EMP-AHFS2	EMPOWER H65W holmium laser footswitch
EMP-ASG	Laser safety goggles
EMP-ASGG	Laser safety glasses
EMP-AWS	Laser warning sign

SPECIFICATIONS

	EMPOWER 35-Watt Ho:YAG Laser	EMPOWER 65-Watt Ho:YAG Laser
Laser Type	Solid state laser Ho:YAG	Solid state laser Ho:YAG
Wavelength	2.1µm	2.1µm
Laser Energy	0.1-5J	0.2-5J
Laser Frequency	3-30Hz	3-60Hz
Maximum Power	35W	65W
Pulse Duration	95-1500 µs	50-1100 µs
Aiming Beam	Green 532nm (adjustable) <5mW, class 3R	Green 532nm (adjustable) <5mW, class 3R
Power Supply	100/115 Vac; 20A; 50/60Hz (Option for: 230 Vac; 10A; 50/60Hz)	200-230 Vac; 50/60Hz; 5kVA
Weight	86kg without water	200kg without water
Dimensions (cm)	37.4 (w) X 85.7 (d) X 107.7 (h)	59.3 (w) x 112.6 (d) x 148.0 (h) 59.3 (w) x 112.6 (d) x 122.6 (h) – Display closed
Laser Cooling System	Integrated water cooling system with water/air heat exchanger	Internal chiller
Transmission System	EMPOWER Laser fiber	EMPOWER Laser fiber
Foot Switch	Wired, single pedal	Wired, dual pedal
Classifications	Class IIb (according to MDD/93/42/EEC) Class 4 (according to IEC 60825-1:2014) Class 1 (Electrical device protection)	

FIBER CONNECTOR	ENERGY DENSITY	NUMERICAL APERTURE (N.A.)	LASER BEAM DIAMETER
SMA 905 or SMA 906	≤50MW/cm ²	≤0.22	≤ Fiber core diameter



References: 1. Aldoukhi AH, Roberts WW, Hall TL, Ghani KR. Holmium laser lithotripsy in the new stone age: dust or bust? *Front Surg.* 2017;4(57). Doi:10.3389/fsurg.2017.00057. 2. Data on file.

Olympus is a registered trademark of Olympus Corporation, Olympus America Inc., and/or their affiliates. | Medical devices listed may not be available for sale in all countries.

OLYMPUS OLYMPUS AMERICA INC.
136 Turnpike Road, Southborough, MA 01772

For more information, contact your Olympus sales representative, or call 800-848-9024.
www.medical.olympusamerica.com
©2018 Olympus America Inc. All rights reserved.
Printed in USA OAIUR00418BR025709

OLYMPUS

HOLMIUM YAG LINE

EMPOWER Laser Systems

Rise to your challenge with the power of choice

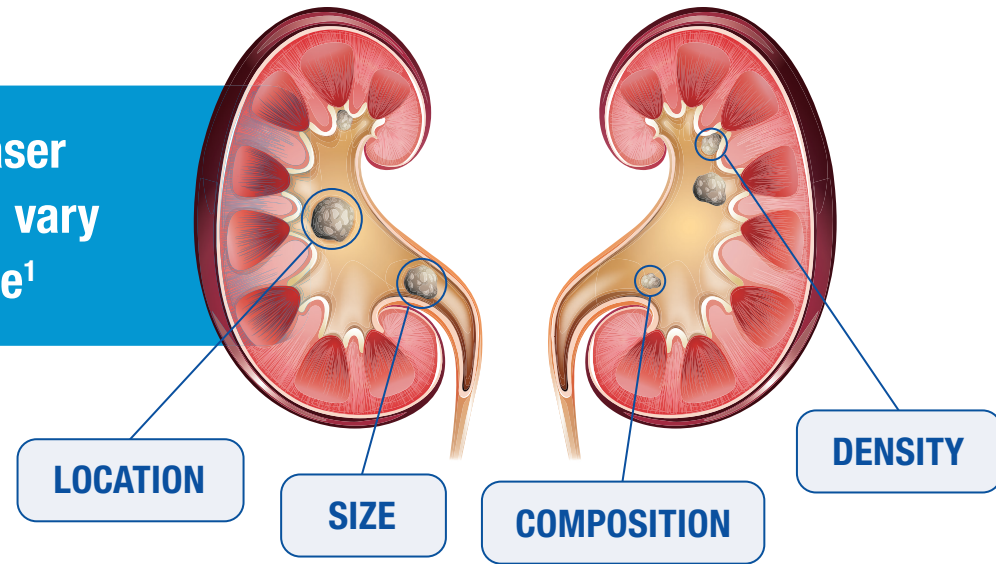


The EMPOWER line of Ho:YAG lasers

More choices to meet the challenges of every new day

Empowers physicians and hospital systems with choices for a full-range line of Ho:YAG lasers and fibers to meet the diverse lithotripsy challenges they face each day.

The optimal laser technique can vary based on stone¹



Higher frequency facilitates dusting:
A technique in high demand¹

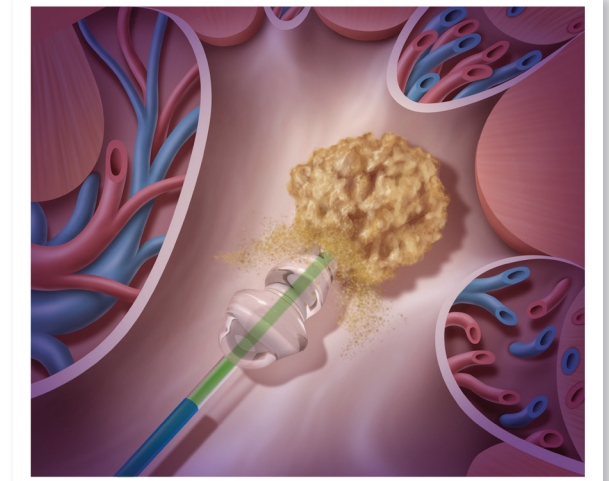
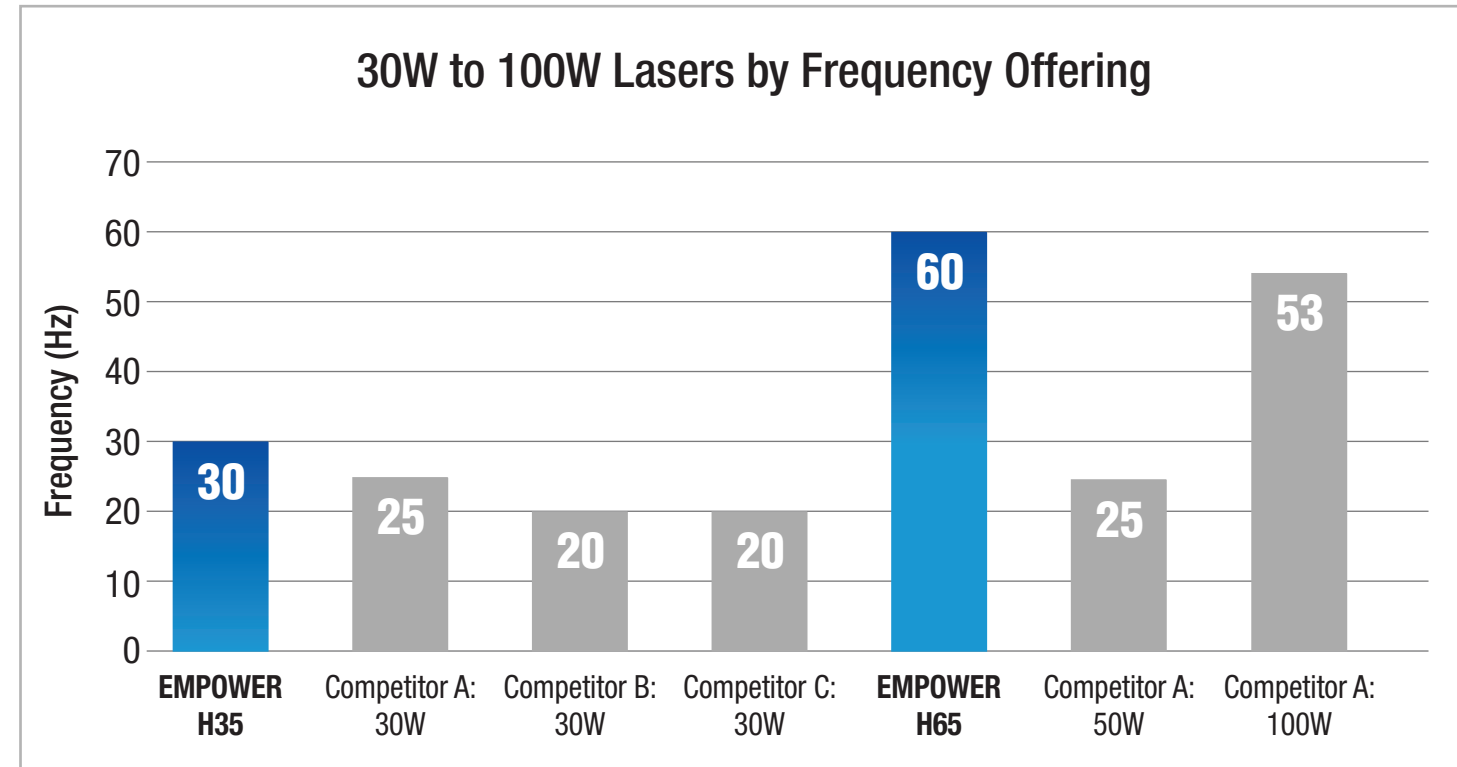
- **64%** of urologists reported using high-frequency, low-pulse energy settings associated with the dusting technique
- Dusting requires significantly **less time** than fragmentation with extraction



High-frequency, low-pulse energy laser settings optimize dusting

Higher frequency of the EMPOWER line affords greater versatility

Efficient system design of the EMPOWER H35 and H65 enables higher frequency settings compared to competitive systems at similar power offerings.



The EMPOWER H65 laser offers a “Stabilization” mode, which creates a path of vapor between the fiber tip and the stone to stabilize the stone during dusting, resulting in a reduced retropulsion effect.²

Lithotripsy emission modes

	H35	H65
Dusting*	✓	✓
Fragmenting	✓	✓
Stabilization		✓
Popcorning		✓

*The Dusting mode for the H35 is long pulse, low frequency and the Dusting mode for the H65 is short pulse, high frequency.

