

1. SCOPE

- 1.1. The instructions in this document are intended for use by IT staff at Health Care Organizations who have purchased OLYSENSE Hub Systems to install Windows and Edge updates on a monthly basis when approved by Olympus.
- 1.2. These instructions are supported only for Windows Server 2016, 2019 and 2022.

2. PROCEDURE

2.1. ABBREVIATIONS

Abbreviation	Definition
WSUS	Windows Services Update Service
OH BSP	OLYSENSE Hub Base Software Package

2.2. One-time setup procedure

- 2.2.1. During the initial site survey and/or installation of the OLYSENSE Hub, Olympus Installer will ask you to choose between two monthly update methods: WSUS (Windows Services Update Service) or Manual. WSUS may be more convenient for you if you have several OLYSENSE Hubs.
- 2.2.2. Manual update method setup procedure:
 - 2.2.2.1. If you choose Manual update method, no further setup is required because the OH BSP is configured for Manual method by default.
Note: Manual updates cannot be executed if the WSUS server is configured.
- 2.2.3. WSUS update method setup procedure.
 - 2.2.3.1. If you already have a WSUS server in your network that you can use for updating your OLYSENSE Hubs, please gather the following information and supply it to Olympus installation team when requested:
 - 2.2.3.1.1. WSUS server IP address and port number (e.g., <http://10.161.1.240:8530>)
 - 2.2.3.1.2. WSUS Group Name for the OLYSENSE Hubs to use

IF YOU DO NOT ALREADY HAVE A WSUS SERVER IN YOUR NETWORK, YOU WILL NEED TO SET ONE UP. PLEASE FOLLOW THE INSTRUCTIONS IN APPENDIX A

2.2.3.2. WSUS Server Setup Instructions.

2.3. MONTHLY UPDATE PROCEDURE

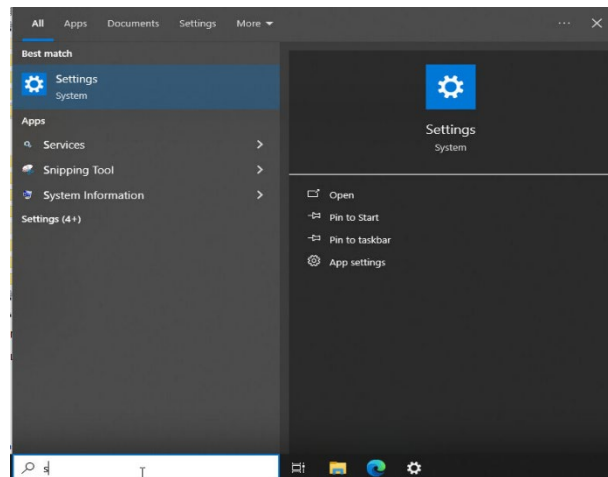
- 2.3.1. Manual monthly update procedure:
 - 2.3.2. **Important:** Please perform these instructions outside of operating hours to avoid any impact to any active clinical procedure.
 - 2.3.3. Login to OLYSENSE Hub using *hcouser* account.
-

2.3.3.1. The first time you log into the *hcouser* account, Windows requires you to change the password. Check with the Olympus installer for the factory-default password, enter it, and then create a new password. Please store the new password in a secure location that can be retrieved every month to perform these updates.

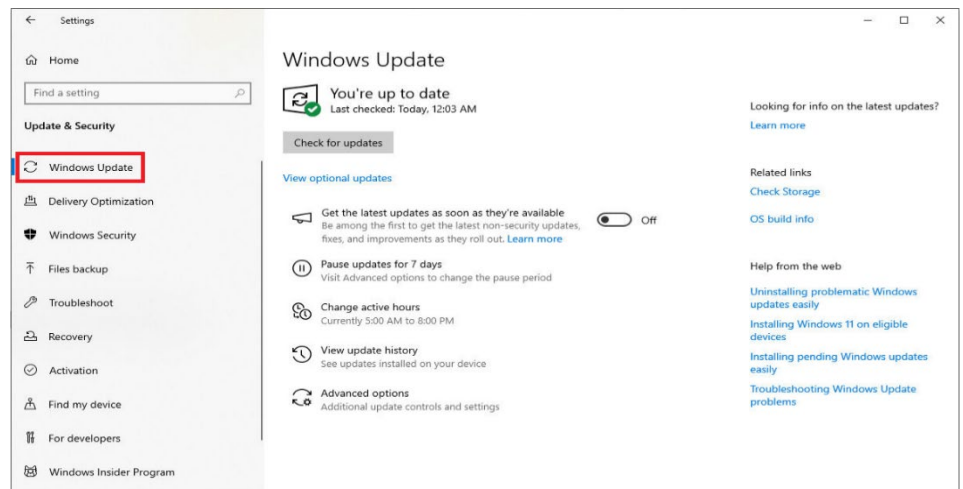
2.3.3.2. If you have lost the *hcouser* password, please contact Olympus support.

2.3.4. Update Microsoft Windows

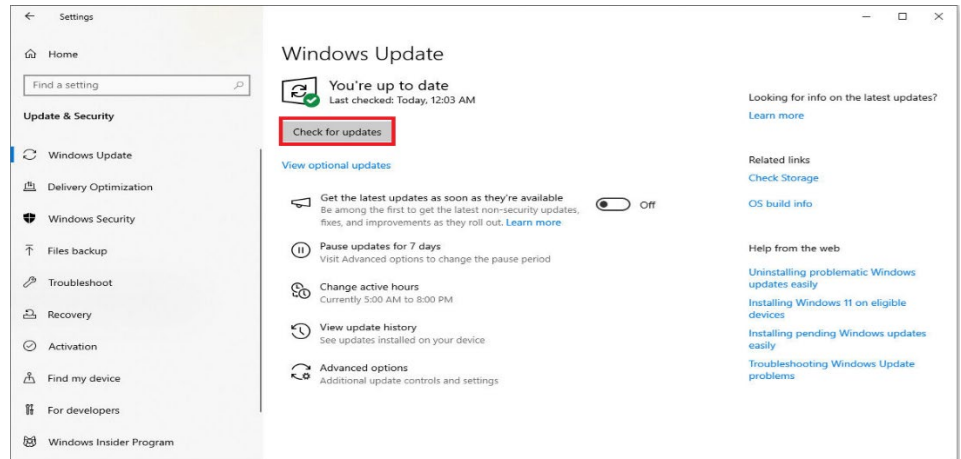
2.3.4.1. Press the Windows key, type **settings**, then click on the icon for Settings.



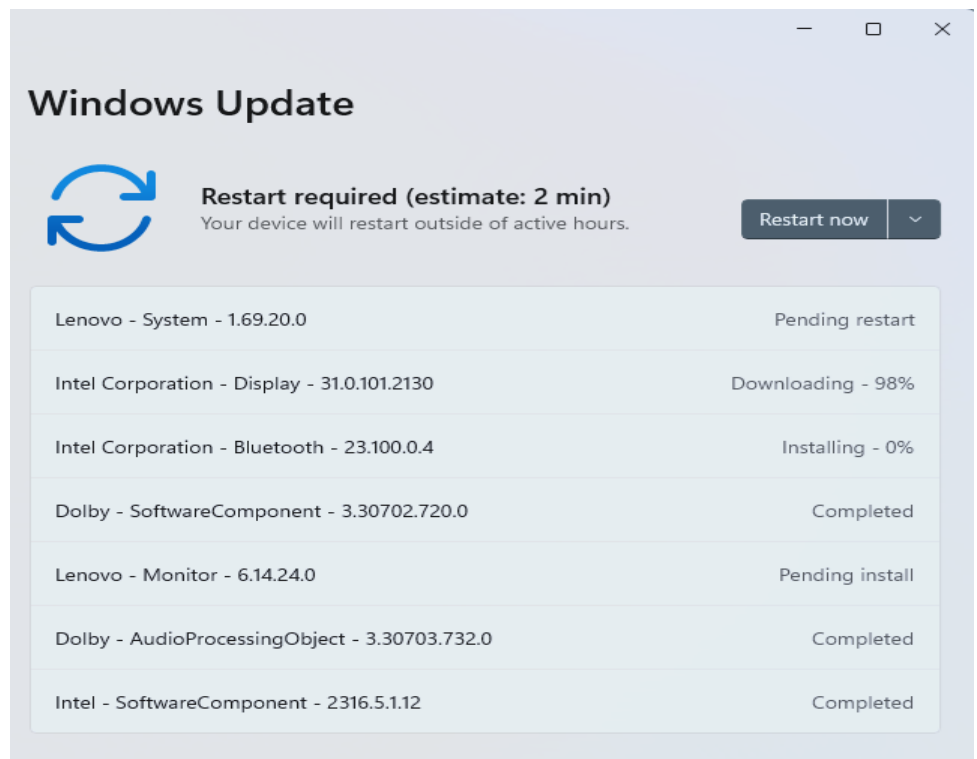
2.3.4.2. In the left navigation page, click “Windows Update”.



2.3.4.3. Click the button Check for updates

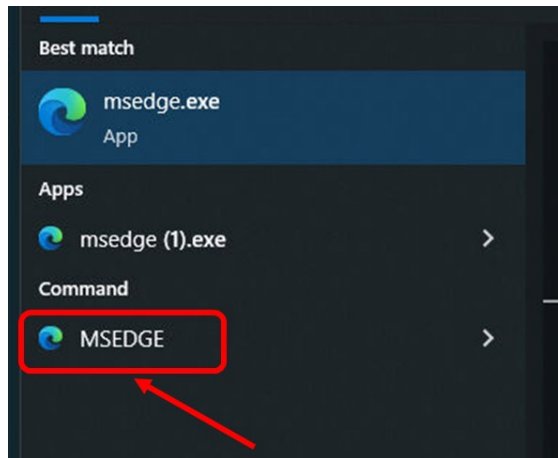


- 2.3.4.4. Verify that the updates are downloaded and installed by viewing the list of updates and the status of each update within the “Windows Update” pop-up (see below).
- 2.3.4.5. After the updates are downloaded and installed, then click the button **Restart now** if prompted.



- 2.3.4.6. Once the system restarts, log in using the **hcouser** account and confirm that all updates were installed successfully.
- 2.3.5. Update Microsoft Edge
 - 2.3.5.1. Press the Windows key, type **PowerShell** in the search bar, then click on the icon for “PowerShell”.

- 2.3.5.2. In the PowerShell window, type the command **cd \Olympus\Tools\Restricted** and press **Enter**.
- 2.3.5.3. Type **.\EdgeU.ps1** and press Enter to run the script. You will be presented with three options,
 - 2.3.5.3.1. 1 – Disable
 - 2.3.5.3.2. 2 – Enable
 - 2.3.5.3.3. 3 – Exit
- 2.3.5.4. Type **2** and press **Enter**. You should see a confirmation message saying **“Enabled”**.
- 2.3.5.5. Press the Windows key, type **msedge** and, under “Command”, click the icon for Microsoft Edge to launch it, as indicated below. Do not select any other msedge menu selection options:



- 2.3.5.6. In Microsoft Edge, click the three dots (...) in the upper-right corner, hover over **Help and Feedback**, then click **About Microsoft Edge**.
- 2.3.5.7. Edge will automatically begin checking for updates.
 - 2.3.5.7.1. If updates are available, the system will download and install them. After installation, a message may prompt the user to restart the browser to apply the updates.
 - 2.3.5.7.2. If it's already up to date, it will display the message "Microsoft Edge is up to date."
- 2.3.5.8. Once the check and/or update is complete, close Edge.
- 2.3.5.9. Return to the PowerShell window.
- 2.3.5.10. Type **.\EdgeU.ps1** and press **Enter** to run the script again.
- 2.3.5.11. This time type **1** then **Enter** to disable automatic Edge updates. You should see a confirmation message **“Disabled”**.
- 2.3.5.12. Re-launch Microsoft Edge as before and navigate again to About Microsoft Edge page as described above. This time, Edge will attempt to

check for the updates but fail. It should display error code “7:0x80072EFD – System”, confirming that automatic updates are disabled as intended.

2.3.6. WSUS Monthly Update Procedure

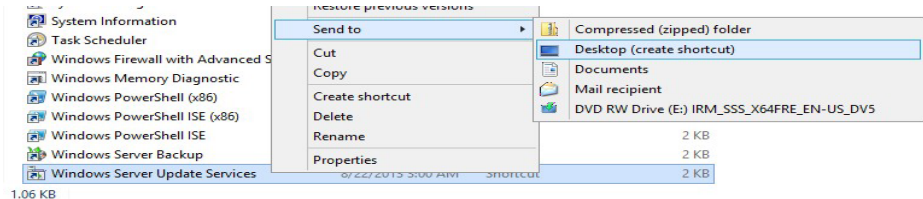
2.3.7. **Important:** Please perform these instructions outside of operating hours to avoid any impact to any active clinical procedure.

2.3.8. Login to your WSUS server.

2.3.9. If the Desktop does not have a shortcut to the WSUS server, follow these one-time steps to create a shortcut for WSUS server:

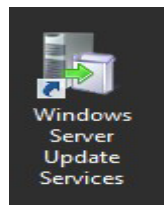
2.3.9.1. Press the Windows key (or click the Start button), then click on Windows Administrative Tools. Scroll down to the bottom, right-click on Windows Server Update Service, and click Windows Server Update Service.

2.3.9.2. Click on Send to and choose Desktop (create shortcut)

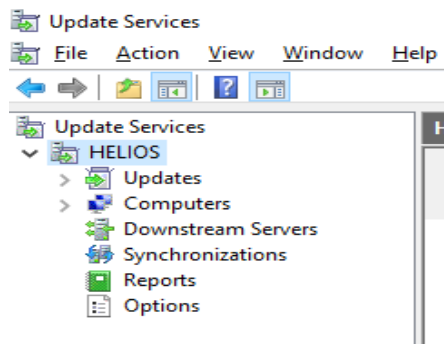


2.3.9.3. Close the Administrative Tools window.

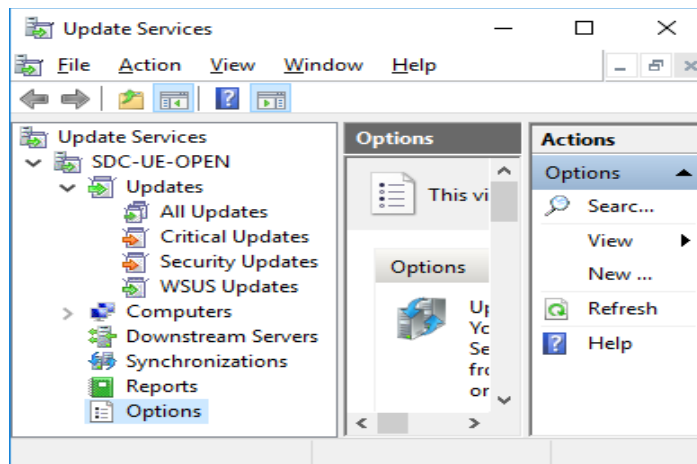
2.3.10. On the Desktop, double click on Windows Server Update Services icon:



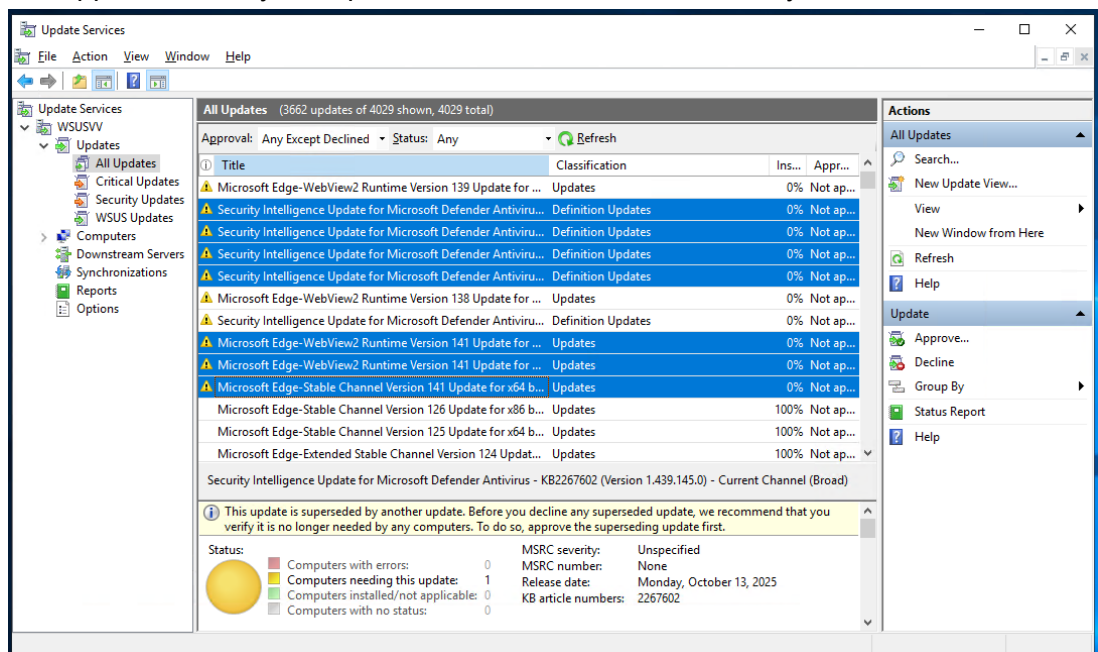
2.3.11. You will now be in WSUS Update Services window:



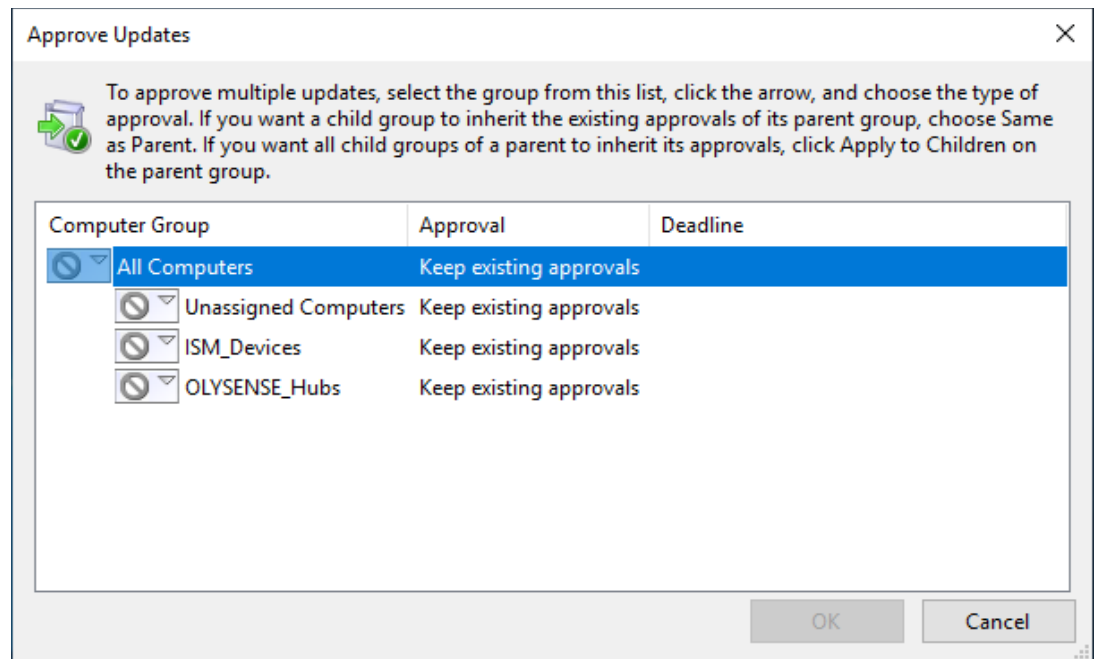
2.3.12. On the left side click the arrow next to the Updates to expand the menu:



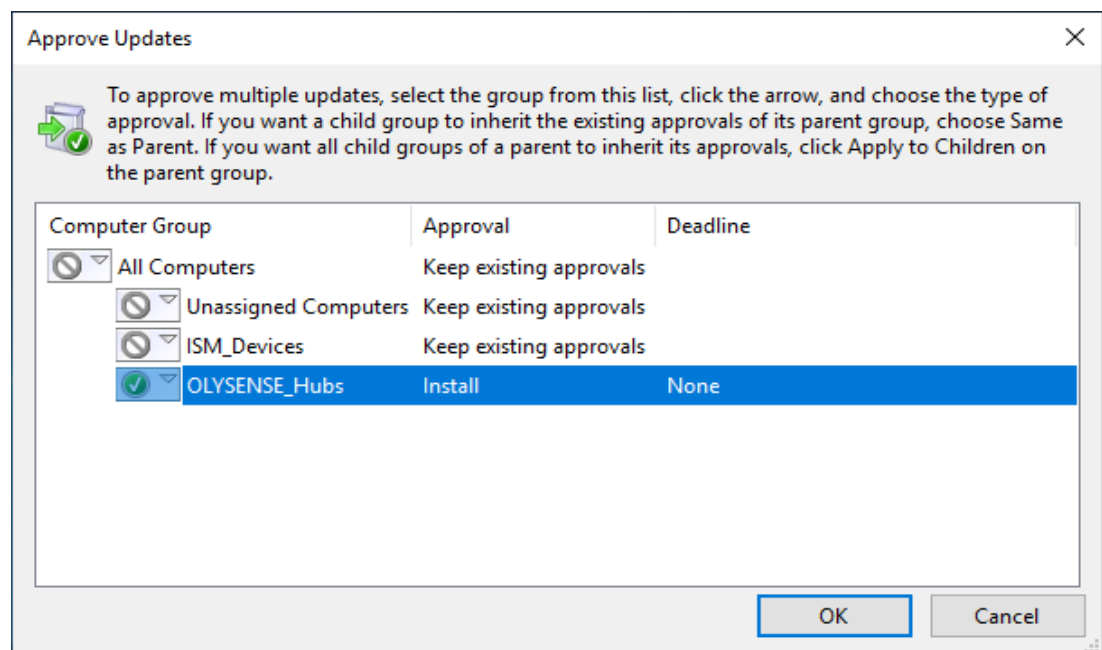
- 2.3.13. Click **All Updates** and select the updates listed in the Olympus published report (you can select multiple updates at the same time). If you do not see the Olympus published updates, apply filters on the right side. Be sure to scroll down and select the version of Microsoft Edge that was approved by Olympus. At the top of the list, set Approval to “Any Except Declined” and set Status to “Any”.



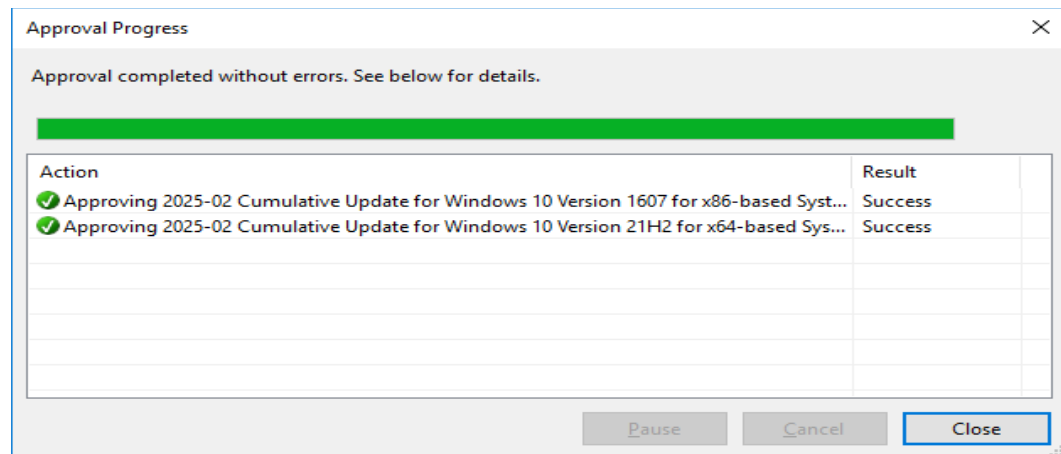
- 2.3.14. Right click on the selected updates and click on **Approve** button from the context menu.
- 2.3.15. Select the group to apply the updates. This must match the name of the group you created for OLYSENSE Hubs, “OLYSENSE_Hubs”.



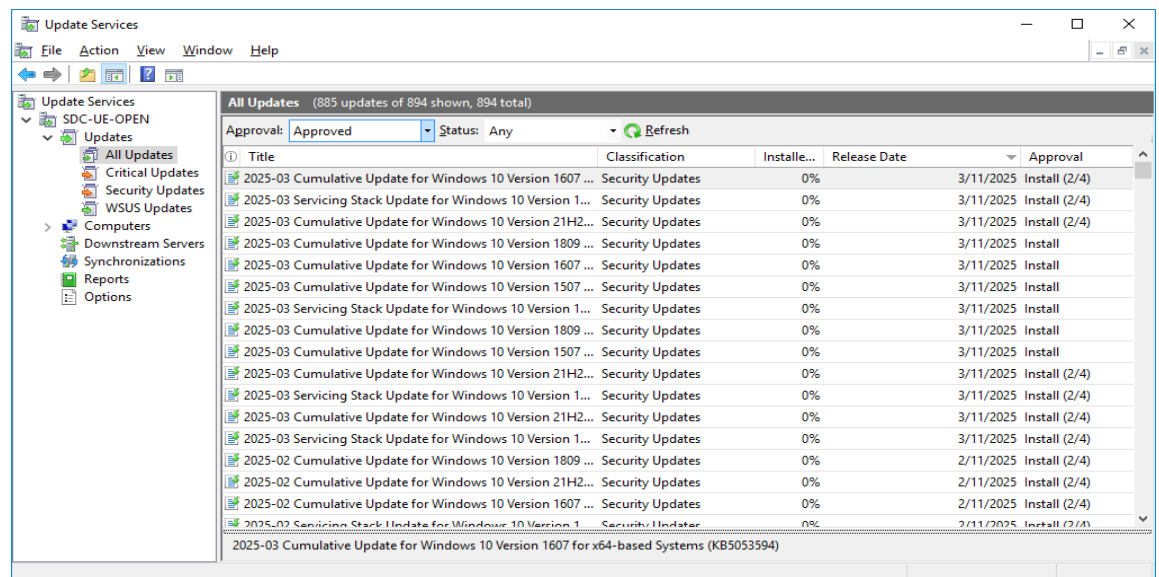
- 2.3.16. Click the **Approved for Install** button to apply all the published updates to computers in that group.



- 2.3.17. Once you click **OK** button, you will see the screen below and when the **Result** column shows **Success**, close this window.



2.3.18. You can also check by filtering the list of approved updates in All Updates screen.



2.3.19. If any OLYSENSE Hubs are not powered on, please power them on until the updates are installed (or overnight).

2.3.20. OLYSENSE Hubs are configured to check for Windows updates from your WSUS server every hour. After finishing the above procedure to approve updates on your WSUS server, it may take an hour or so for each OLYSENSE Hub to check for updates and begin the update installation.

3. RESPONSIBILITIES

3.1. Customer IT personnel: Follows these instructions on a monthly basis after Olympus approves Windows and Edge updates.

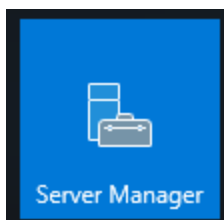
4. REFERENCES

4.1. DN0070482, System Installation Instructions, OLYSENSE Hub

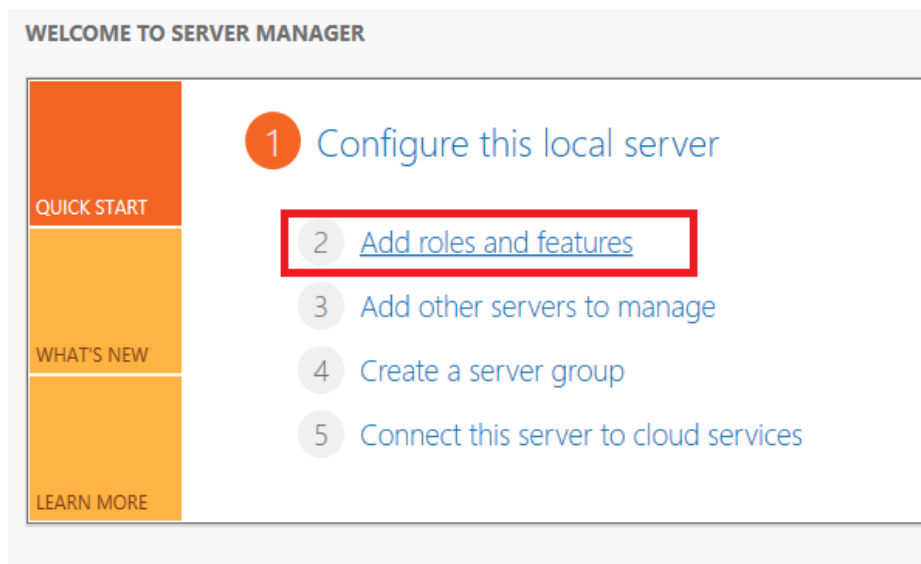
APPENDIX A

WSUS Server Setup Instructions

- 4.2. The remaining steps in this section are needed only if you do not already have a WSUS server in your network. You will need to complete this procedure before Olympus installer arrives since they will need some information about your server to configure the OLYSENSE Hub to communicate with it.
- 4.3. Prerequisites:
 - 4.3.1. A supported version of Windows Server is installed (e.g., Windows Server 2019 or 2022).
 - 4.3.2. Administrator privileges on the machine.
 - 4.3.3. The server has internet access.
 - 4.3.4. .NET Framework is installed
 - 4.3.5. Firewall rules are configured (or disabled) to allow WSUS installation and communication.
- 4.4. Press the Windows key, then click on Server Manager.



- 4.5. From the WELCOME TO SERVER MANAGER window, click **Add roles and features** (note: you may need to wait a couple of minutes for the page to finish loading).



- 4.6. On the next 3 screens click on the **Next** button. **Note:** On Windows Server 2019 and 2022 the first screen may not appear.

Add Roles and Features Wizard

DESTINATION SERVER
HERMES.engineering.local

Before you begin

Before You Begin

Installation Type

Server Selection

Server Roles

Features

Confirmation

Results

This wizard helps you install roles, role services, or features. You determine which roles, role services, or features to install based on the computing needs of your organization, such as sharing documents, or hosting a website.

To remove roles, role services, or features:
[Start the Remove Roles and Features Wizard](#)

Before you continue, verify that the following tasks have been completed:

- The Administrator account has a strong password
- Network settings, such as static IP addresses, are configured
- The most current security updates from Windows Update are installed

If you must verify that any of the preceding prerequisites have been completed, close the wizard, complete the steps, and then run the wizard again.

To continue, click Next.

☐ Skip this page by default

< Previous **Next >** Install Cancel

Add Roles and Features Wizard

DESTINATION SERVER
HERMES.engineering.local

Select installation type

Before You Begin

Installation Type

Server Selection

Server Roles

Features

Confirmation

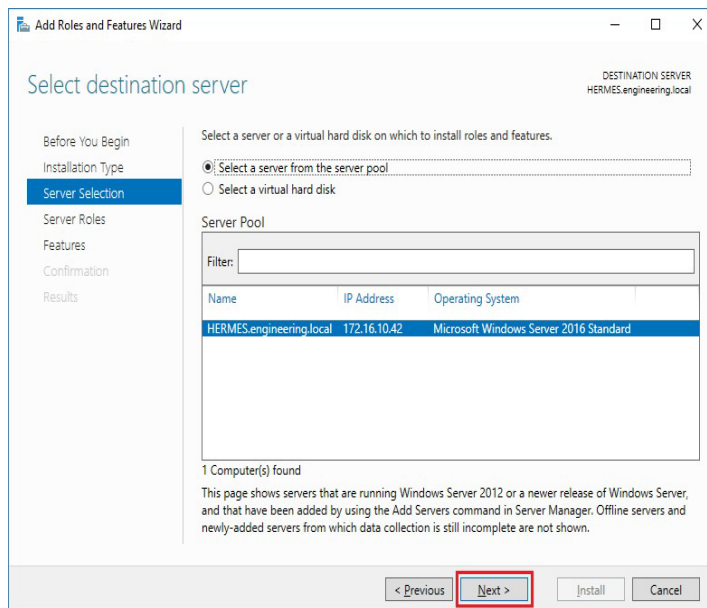
Results

Select the installation type. You can install roles and features on a running physical computer or virtual machine, or on an offline virtual hard disk (VHD).

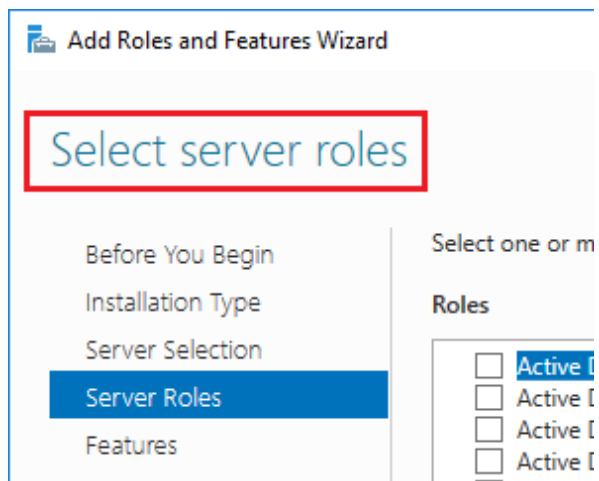
☒ **Role-based or feature-based installation**
Configure a single server by adding roles, role services, and features.

☐ **Remote Desktop Services installation**
Install required role services for Virtual Desktop Infrastructure (VDI) to create a virtual machine-based or session-based desktop deployment.

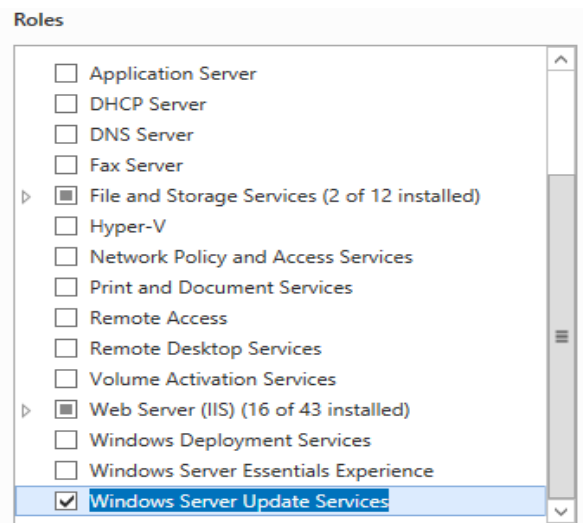
< Previous **Next >** Install Cancel



4.7. You should now be on the **Select Server Roles** window:

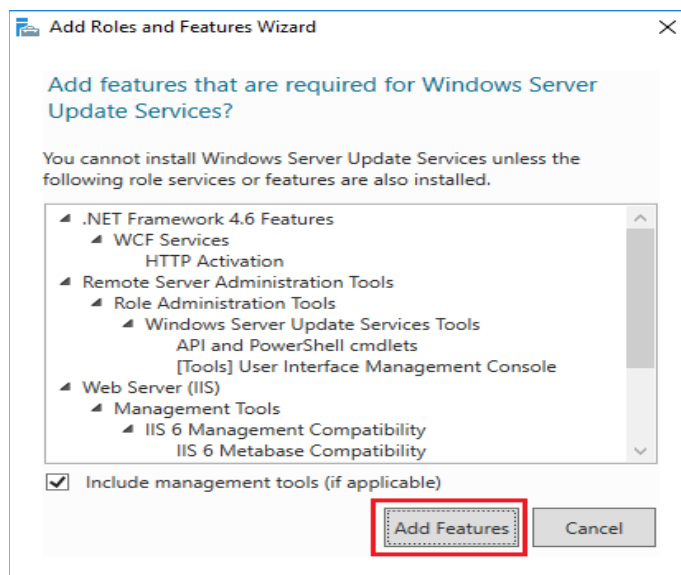


4.8. Scroll to the bottom of the window and check the box next to **Windows Server Updates Services**:

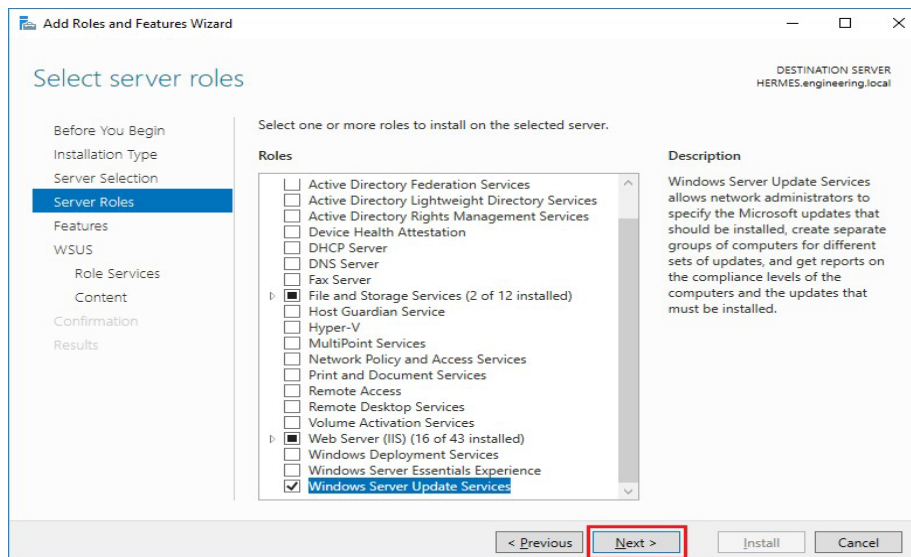


4.9. In the pop-up window click on the Add Features button (for Windows Server 2019 the role services will be different from those show in the figure)

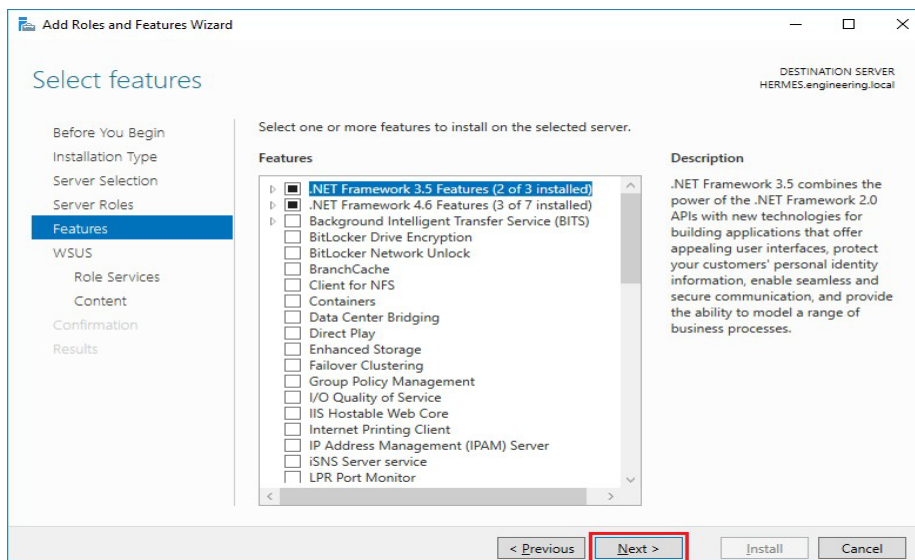
4.9.1. Note: Make sure “Include management tools (if applicable)” is checked as shown in the image



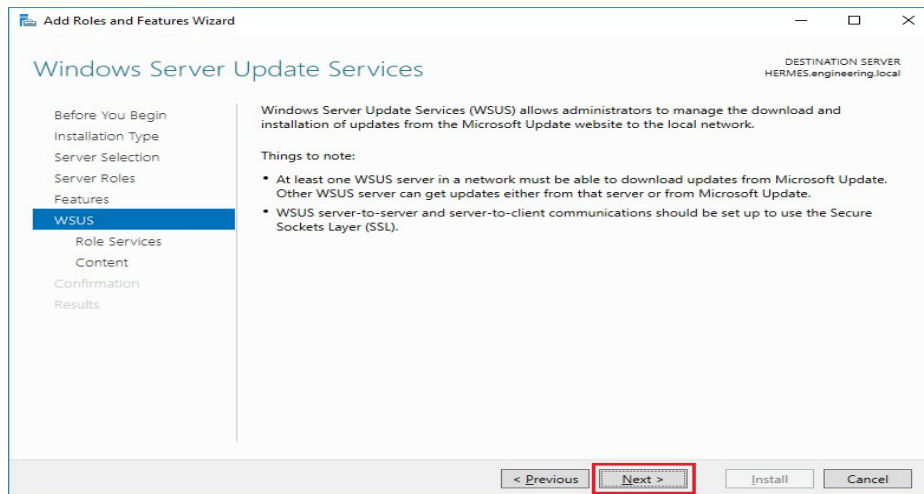
4.10. On the “Select server roles” window, click the Next button



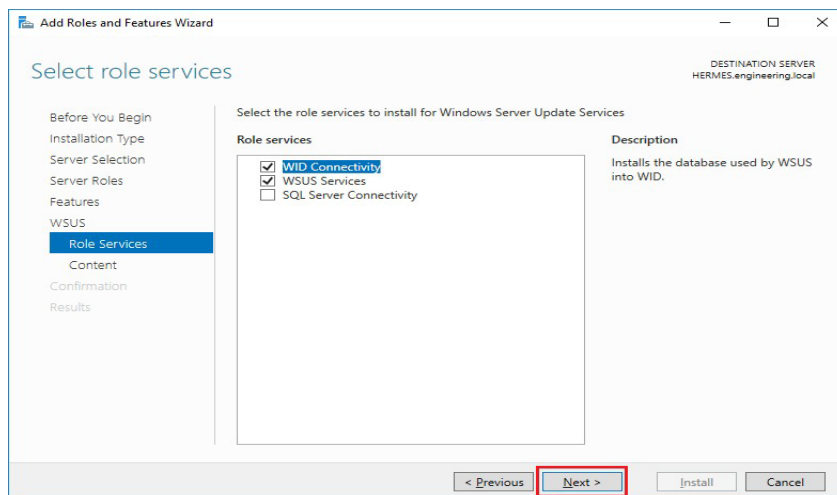
4.11. In the “Select features” popup, click on the Next button



4.12. On the “Windows Server Update Services” window, click the Next button

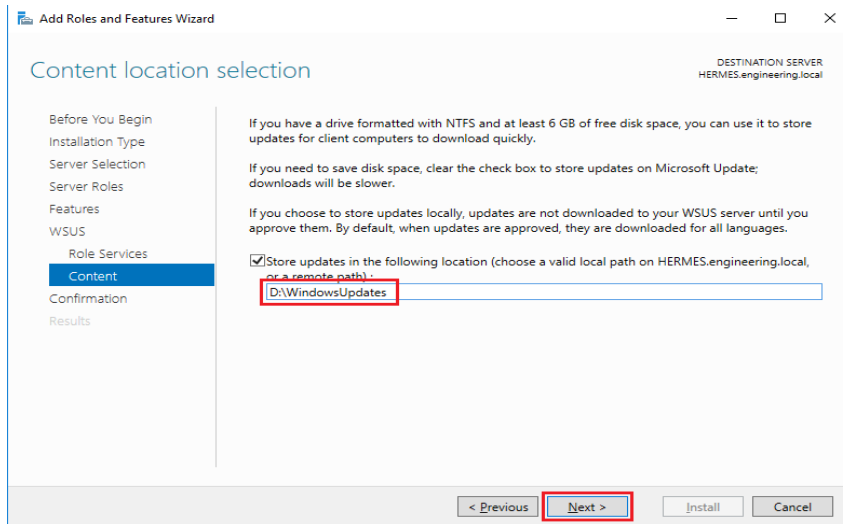


4.13. On the “Select role services”, click the Next button

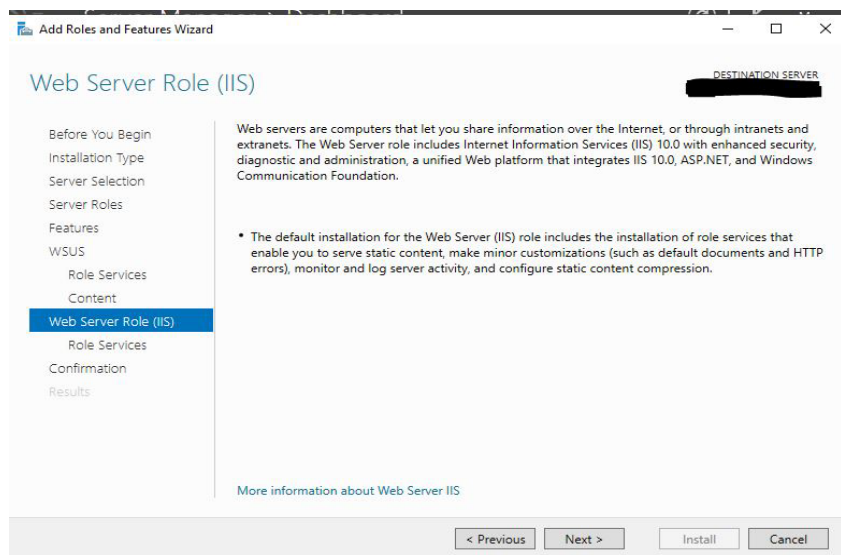


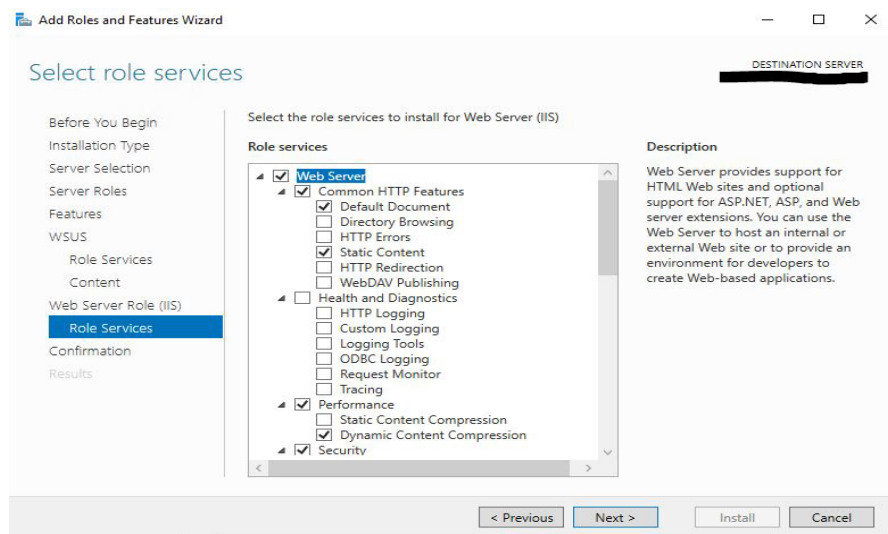
4.14. On the next page, enter the path to where Updates will be stored. This location should have at least 300GB of storage. Then click the Next button

4.14.1. Note: 300GB of storage ensures that there is enough space for a large number of updates. If less space is available, remove older updates over time to reserve space for new updates and to ensure that the updates can still be applied.

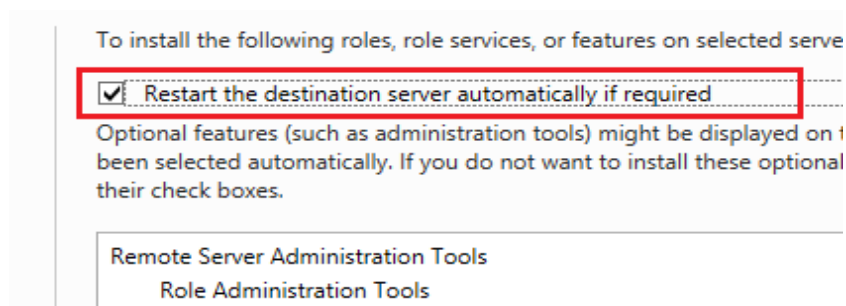


4.15. Click on Next button in the next two screens

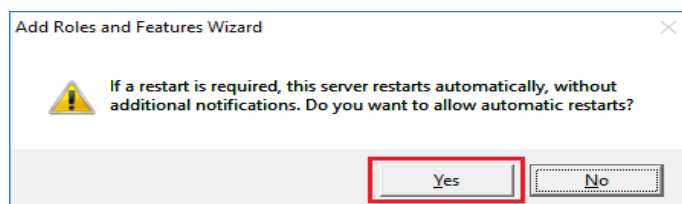




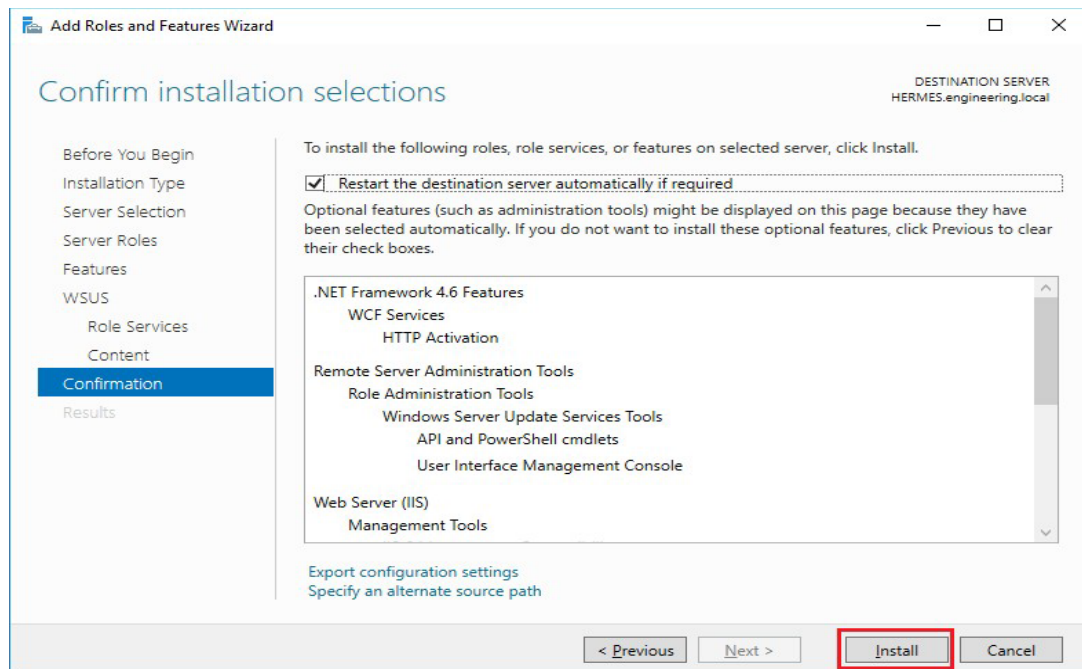
4.16. Check the box next to “Restart the destination server automatically if required”



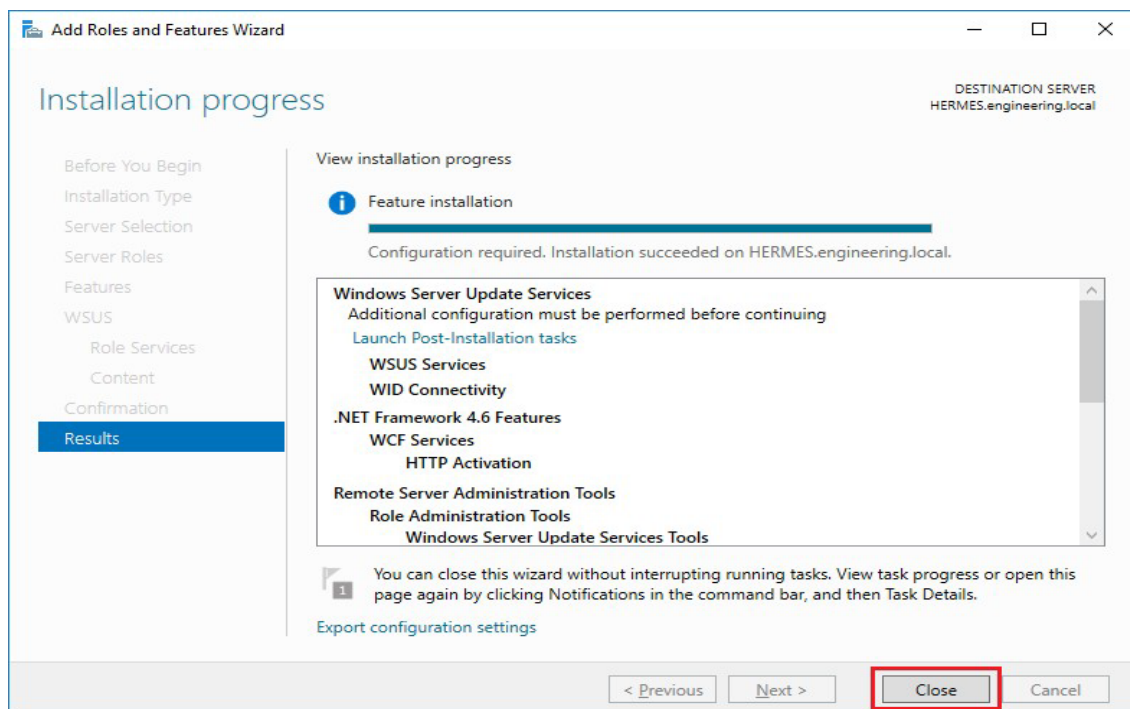
4.17. Click Yes in the pop-up window



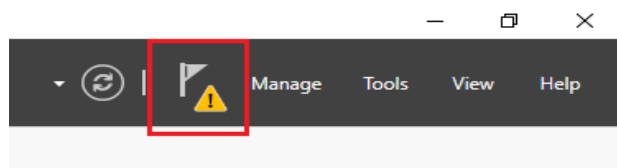
4.18. Click the Install button (for WS 2019 this list of optional features will appear differently from the ones shown in the figure below)



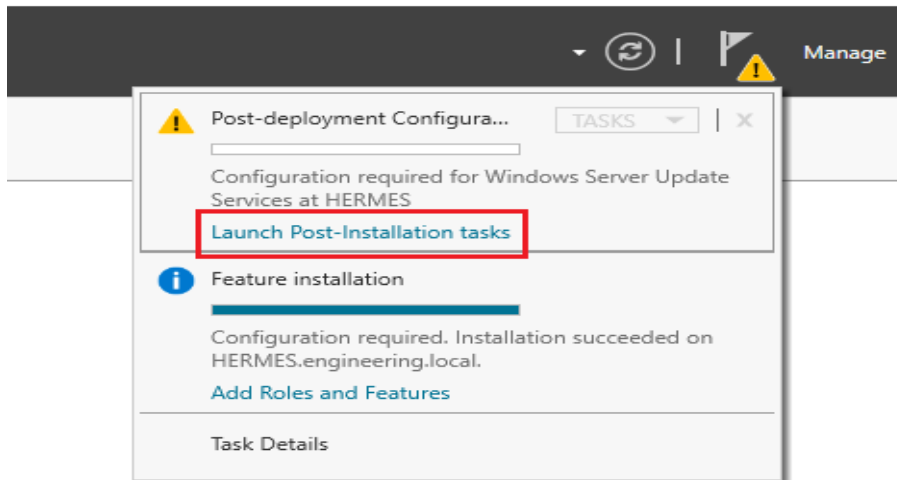
4.19. When the install finishes click the Close button



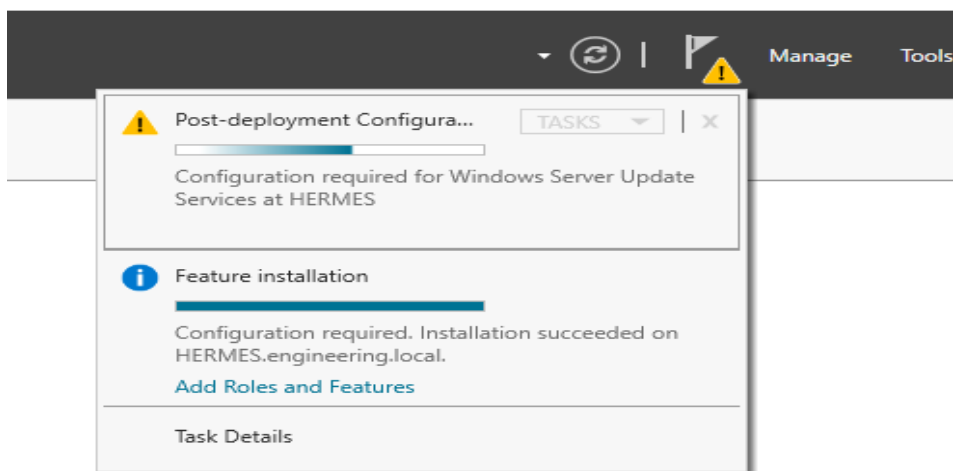
4.20. In the top right of the server manager click the Flag.



4.21. Click the Launch Post-Installation tasks link



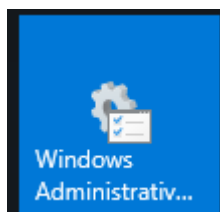
4.22. Nothing will seem to happen, but if you click on the flag again, you will see the system running some post deployment configuration.



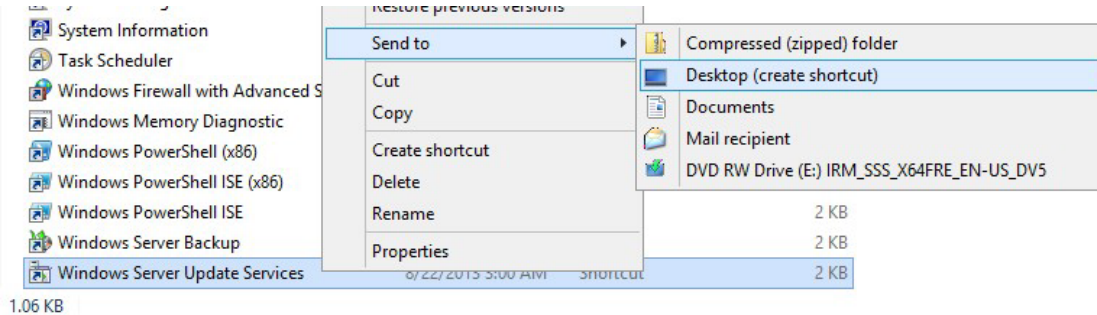
4.23. When the deployment finishes reboot the server.

4.24. After the system reboots, log back in as Administrator.

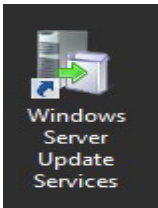
4.25. Press the Windows key, then click on Windows Administrative Tools



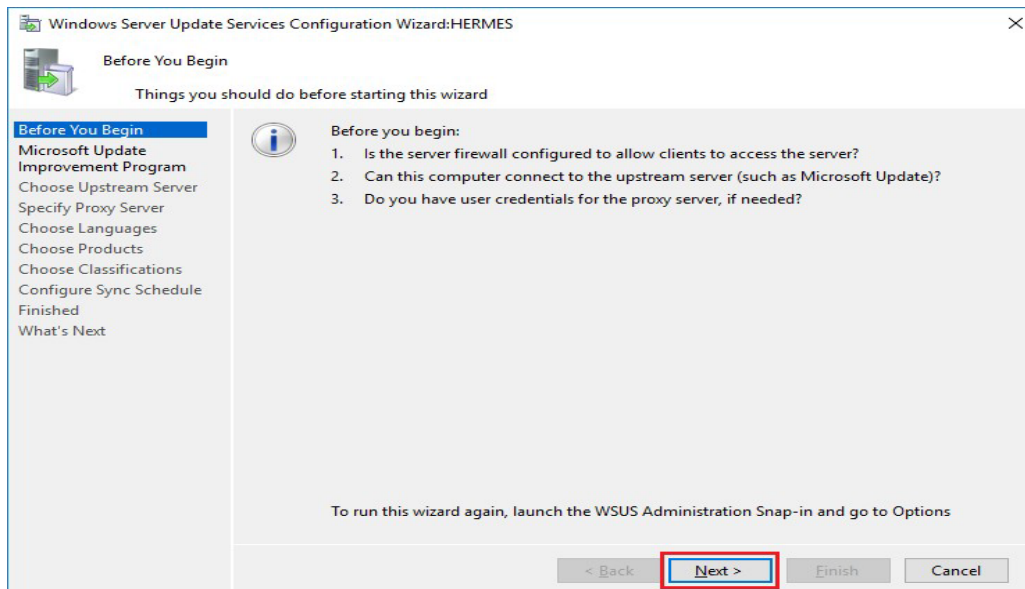
- 4.26. Scroll down to the bottom and right-click on Windows Server Update Service, then click “Send to” and choose “Desktop (create shortcut)”.



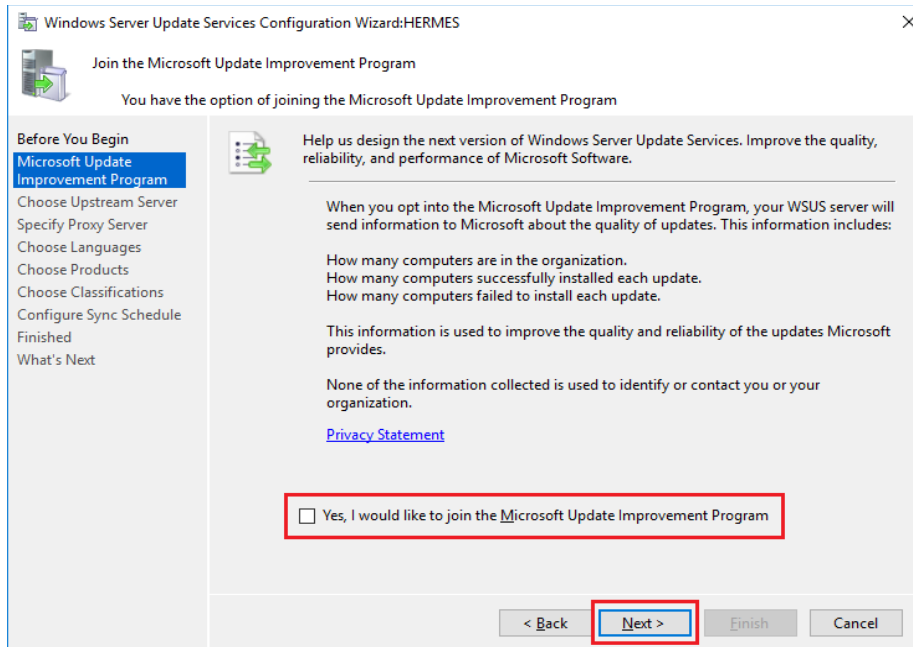
- 4.27. Close the Administrative Tools window.
- 4.28. On the Desktop double click on Windows Server Update Services



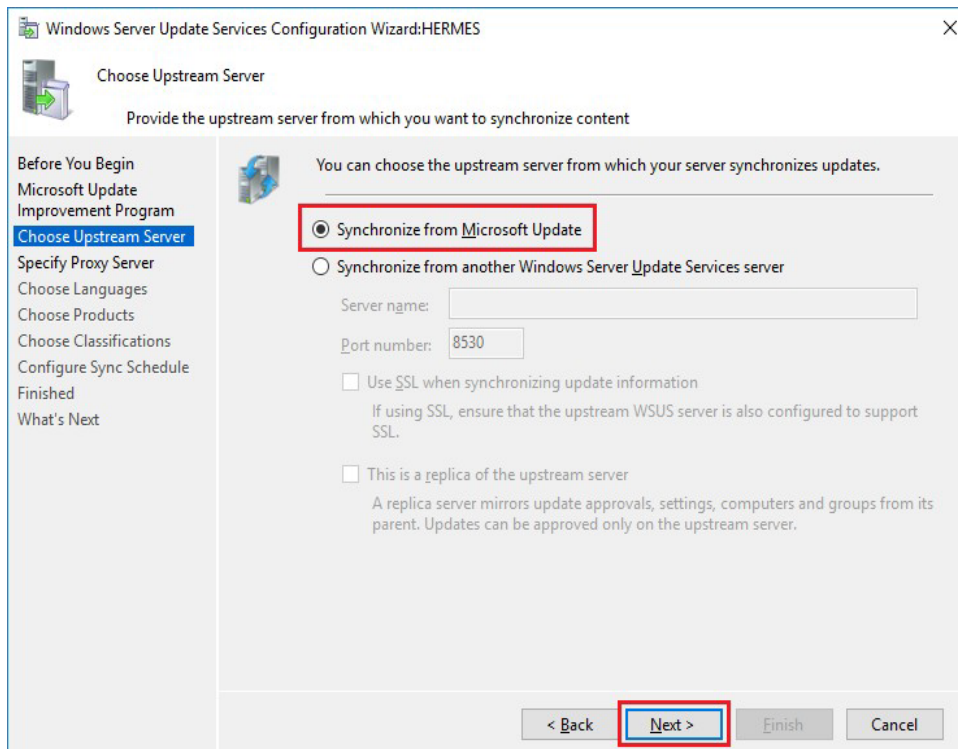
- 4.29. Click the **Next** button



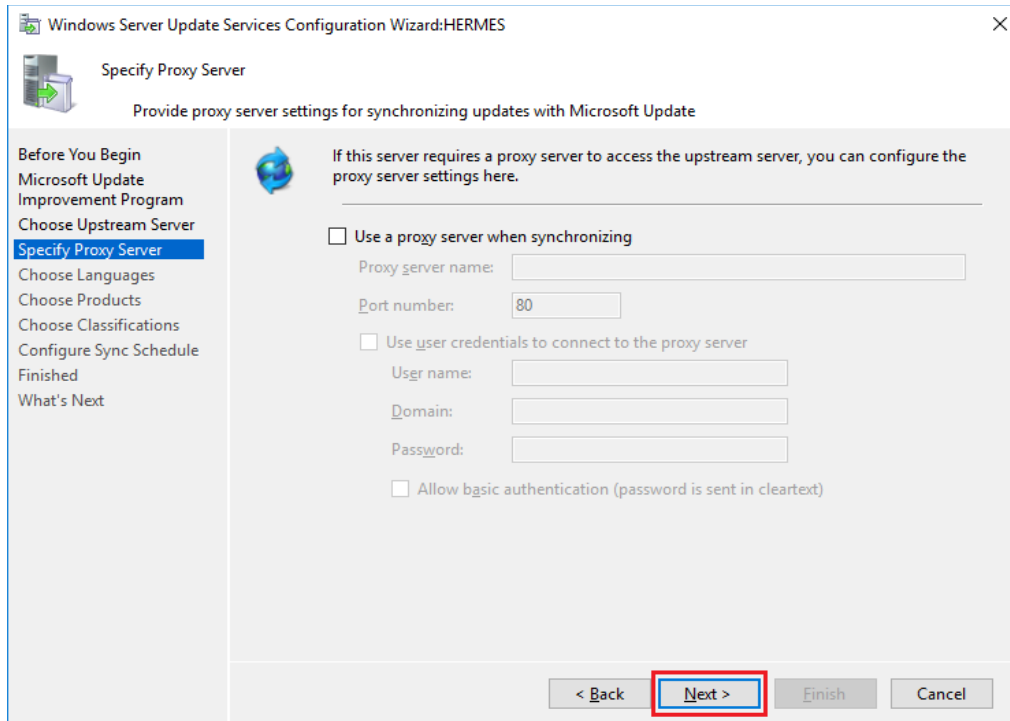
- 4.30. Uncheck the box next to **Yes**, I would like to join the Microsoft Update Improvement Program, and click the **Next** button



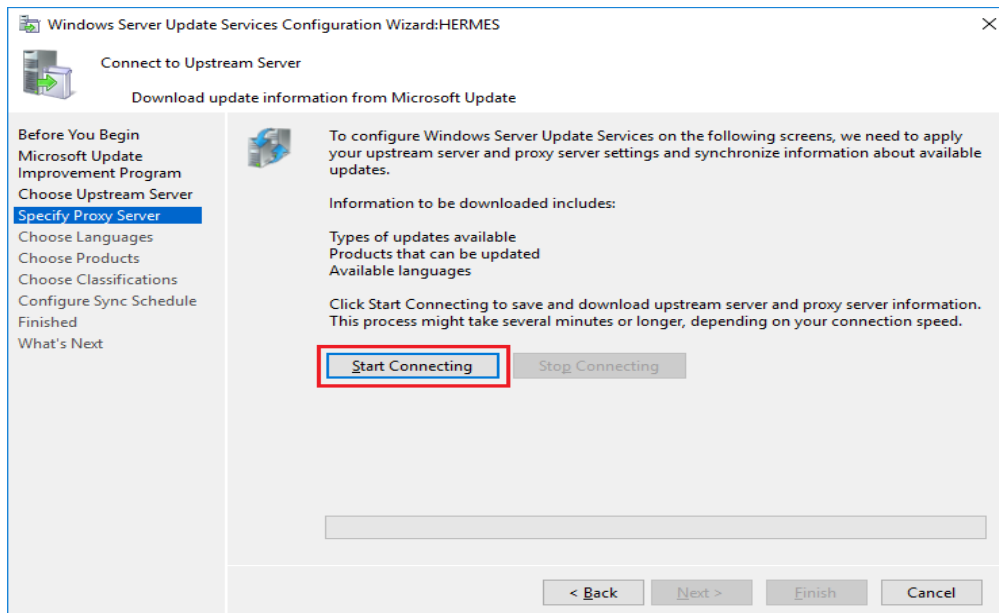
4.31. Make sure **Synchronize from Microsoft Update** is selected and click the **Next** button



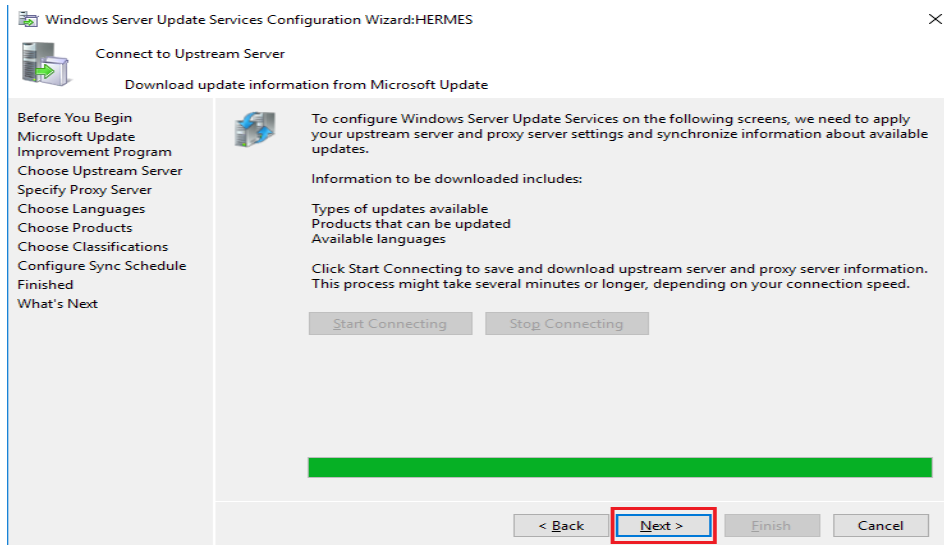
4.32. If the hospital requires a proxy server to access the internet, get that information from the IT group, click “Use a proxy server when synchronizing”, and enter the information here. Otherwise, just click the **Next** button



4.33. Click the **Start Connecting** button

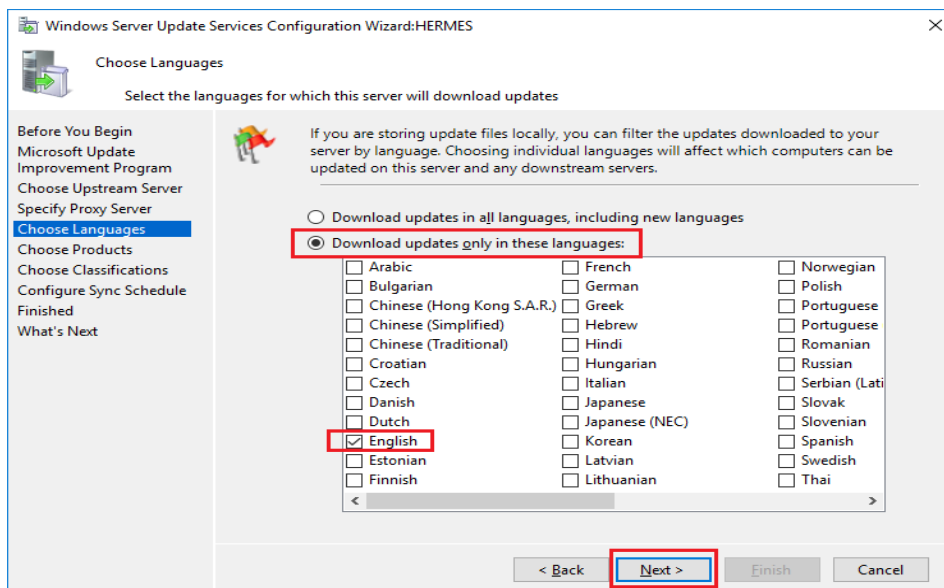


4.34. Once the connection has finished (this can take some time), click the **Next** button

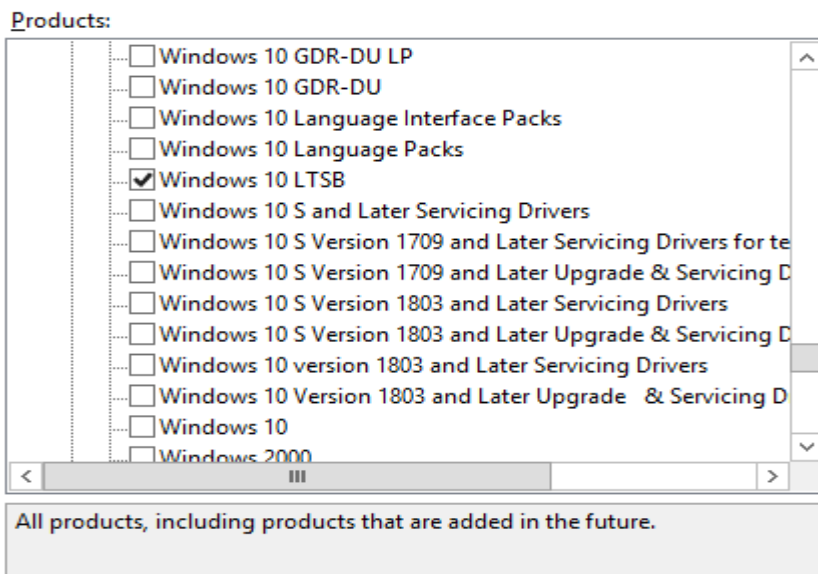


4.35. Click the radio button next to Download updates only in these languages

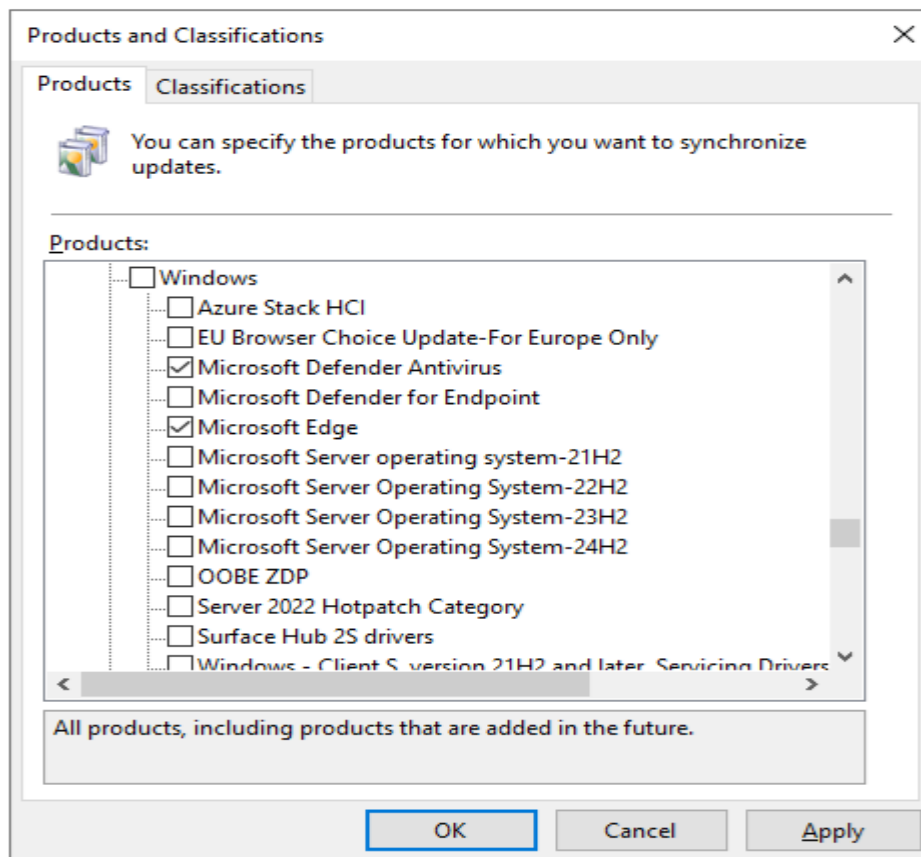
4.36. Check the box next to the regional language (for example, **English**). Make sure no other boxes are checked and click the **Next** button



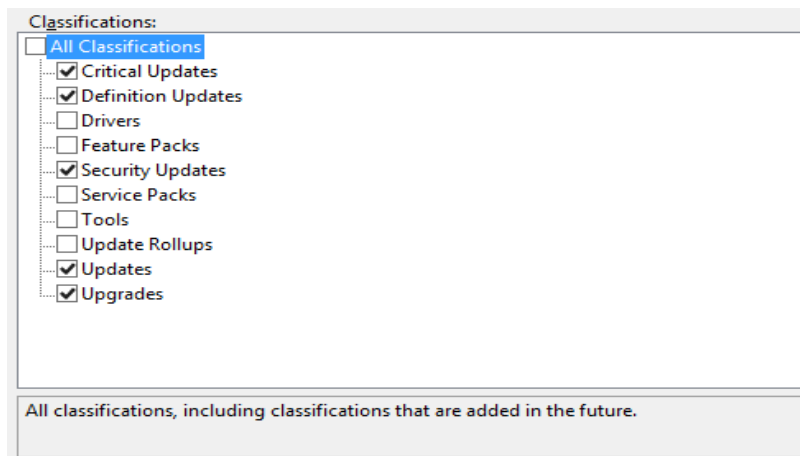
4.37. Uncheck all the boxes and then check only **Windows 10 LTSC** and **Windows Defender Antivirus**



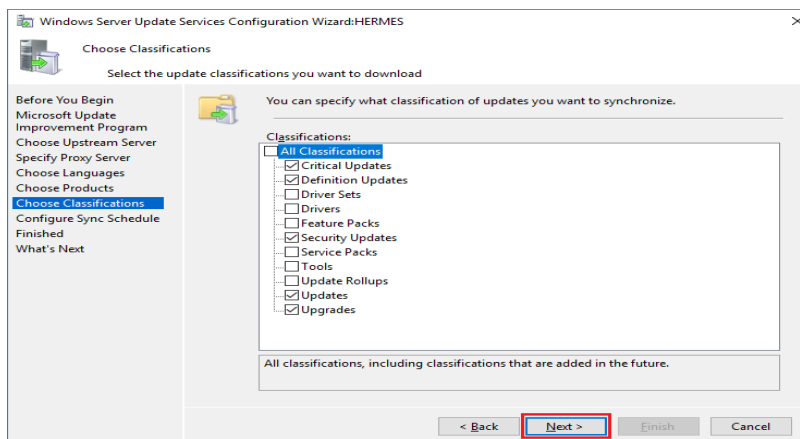
- 4.38. Click the **Next** button and make sure both Microsoft Defender Antivirus and Microsoft Edge are checked:



- 4.39. Make sure the following are checked:



4.40. Click the **Next** button



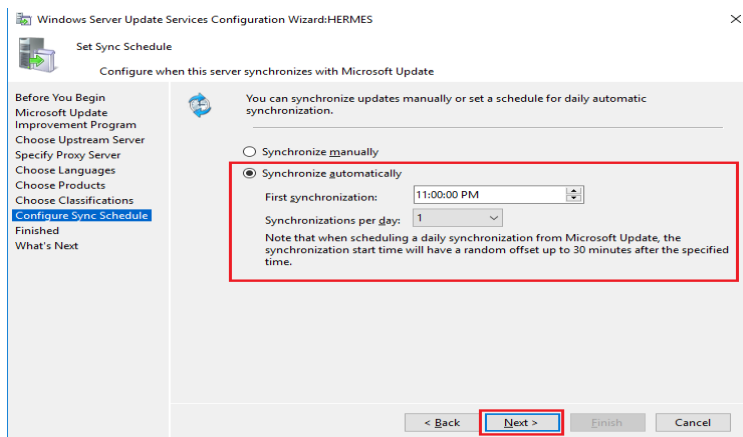
4.41. Click on the radio button next to **Synchronize Automatically**

4.42. Change the First synchronization time to **11:00:00PM**

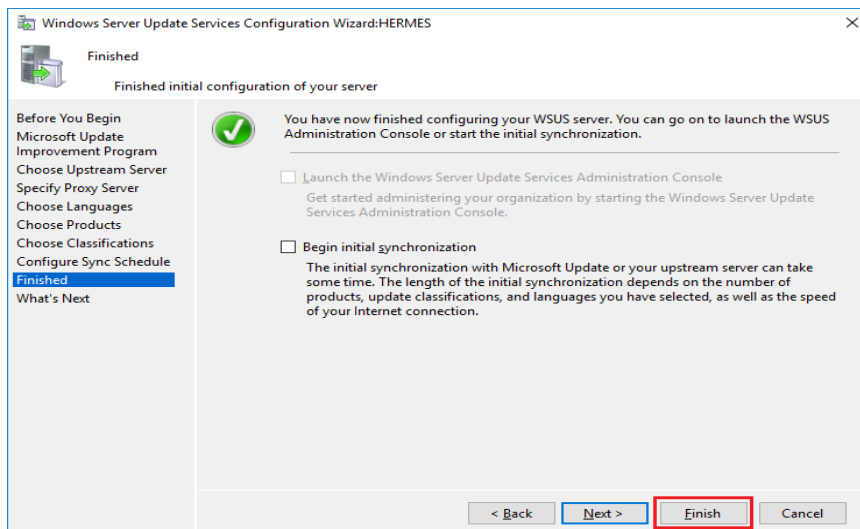
4.42.1. NOTE: This time is based on client systems checking for updates at 1:00:00am. This gives the server two hours to download new updates. If the client checking time is changed, this time may need to be changed as well.

4.43. Set Synchronizations per day to 1

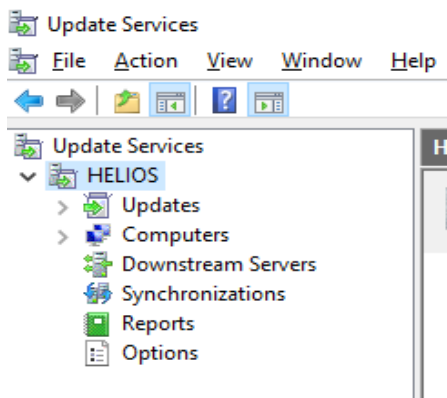
4.44. Click the **Next** button



4.45. Click the **Finish** button

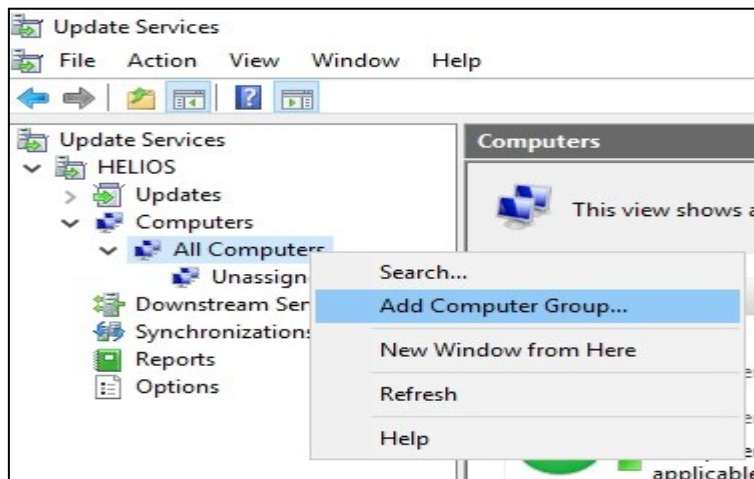


4.46. You will now be in **WSUS Update Services** window (note that "HELIOS" shown below will be the actual hostname of the WSUS server you created).

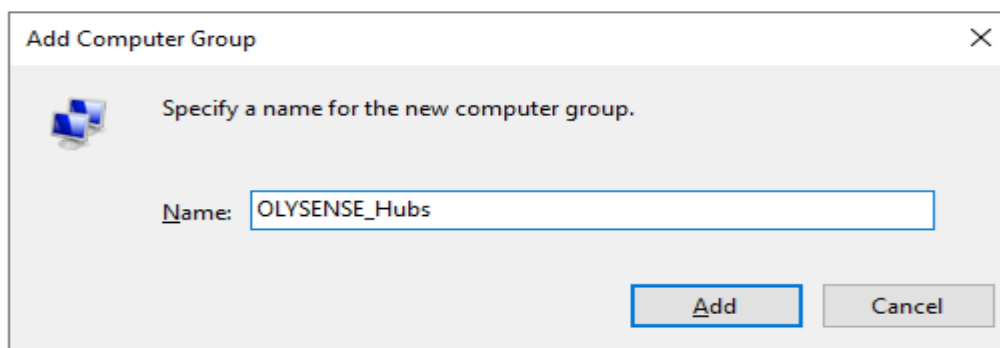


4.47. On the left side click the arrow next to the **Computers**

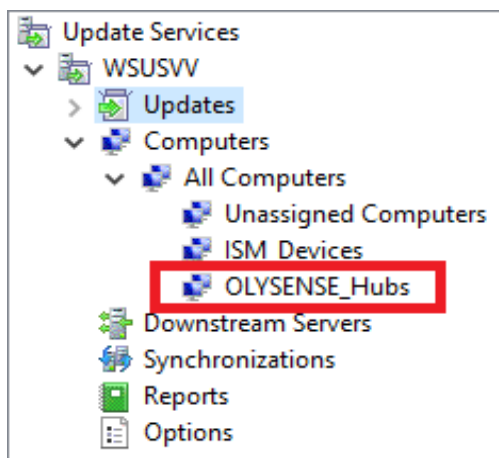
4.48. Right click on All Computers and select Add Computer Group...



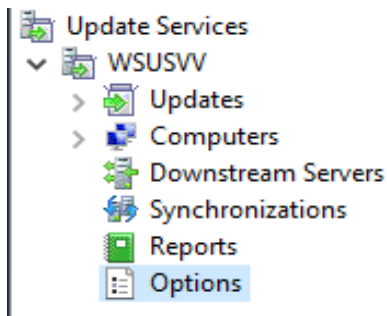
- 4.49. In the window that comes up type the name OLYSENSE_Hubs, then click the Add button.
- 4.49.1. **Important:** this must match the name of the WSUS group you shared with the Olympus installer.



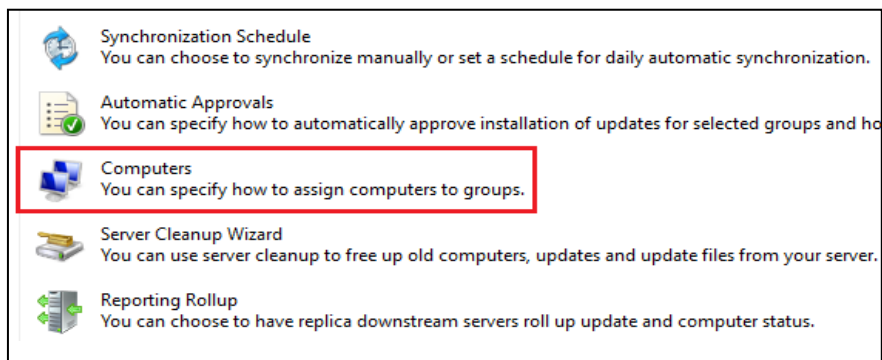
- 4.50. You will now have the group with the name entered above listed under **All Computers**:



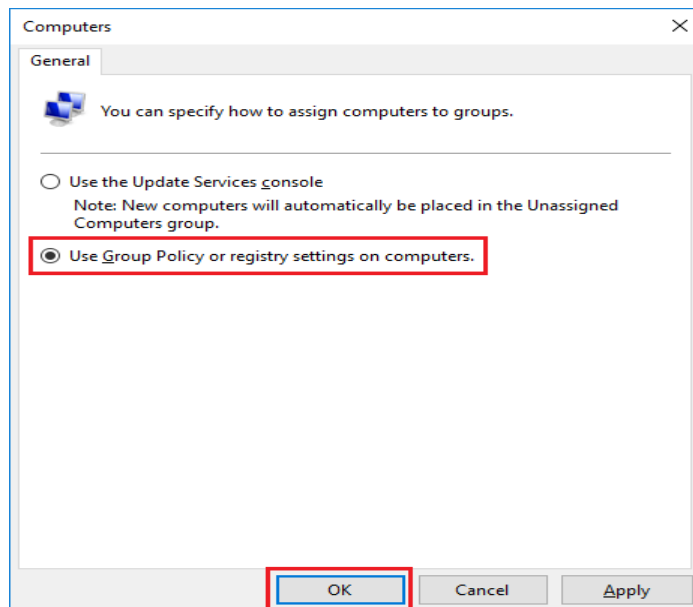
- 4.51. On the left side click on **Options**



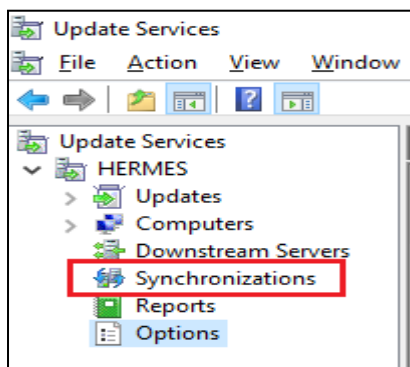
4.52. In the Options window click on **Computers**



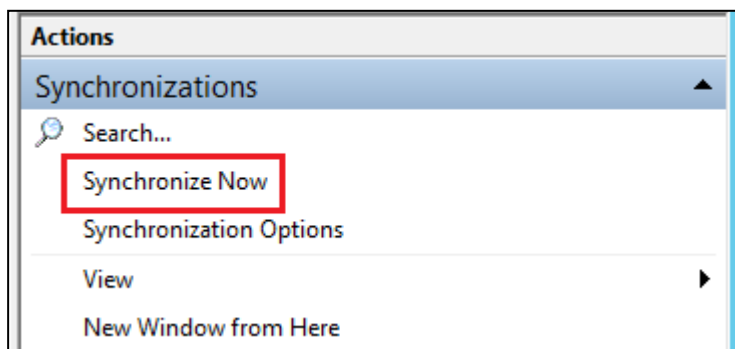
4.53. Select Use Group Policy or registry settings on computers and then click the OK button



4.54. On the left side click on **Synchronizations**



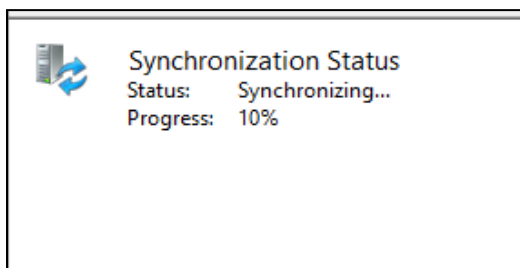
4.55. On the right side click on the **Synchronize Now** link



4.56. In the middle of the page click on the **Running synchronization**

Synchronizations (2 synchronizations)							
Started	Finished	Type	Result	New ...	Revis...	Expir...	
N/A	N/A	N/A	Running...				
3/23/2018 4:03 PM	3/23/2018 4:11 PM	Manual	Succeeded	0	0	0	

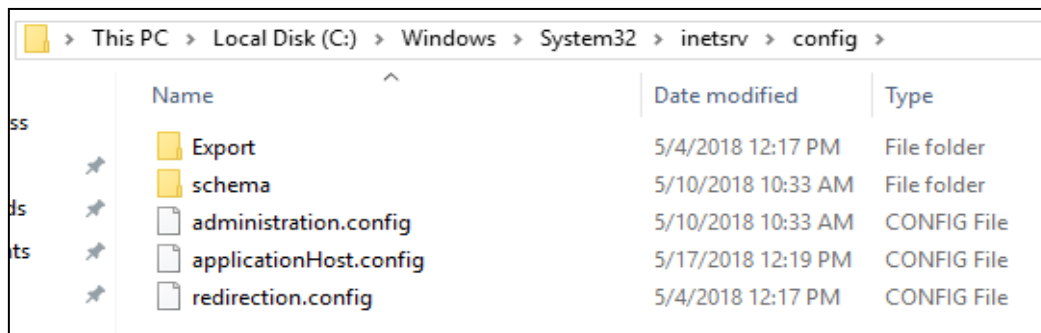
4.57. In the bottom middle of the page you will be able to see the current **Synchronization Status**



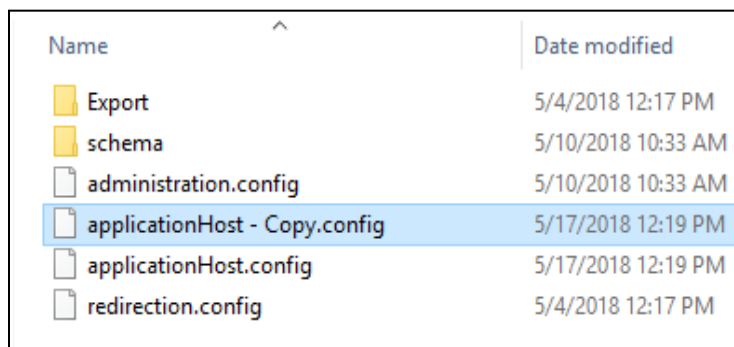
4.58. Wait until Synchronization completes.

4.59. Close the Updates Services window.

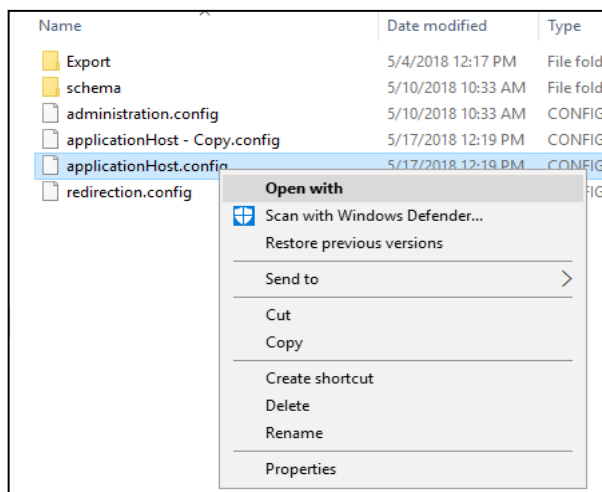
4.60. Open file explorer window and navigate to *C:\Windows\System32\inetsrv\config*



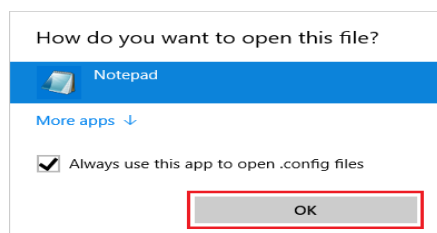
- 4.61. Click the file **applicationHost.config**, then copy (Ctrl-C) and paste (Ctrl-V) it into the same directory. This creates a backup copy in case changes need to be reverted.



- 4.62. Right-click on applicationHost.config file and select Open With



- 4.63. Click **Notepad** and press **OK**



4.64. Make the following two changes:

4.64.1. Find the <applicationPools> section. Change this line:

4.64.1.1. `<add name="WsusPool" managedRuntimeVersion="v4.0" managedPipelineMode="Integrated">`

4.64.2. To:

4.64.2.1. `<add name="WsusPool" autoStart="true" managedRuntimeVersion="v4.0" managedPipelineMode="Integrated">`

4.64.3. (Note: autoStart is case-sensitive)

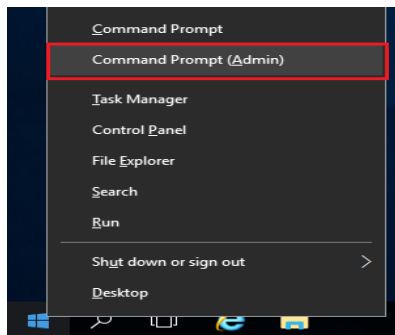
4.64.4. Find the <httpCompression...> section. Remove the following line:

4.64.4.1. `<scheme name="xpress" doStaticCompression="false" doDynamicCompression="true" dll="C:\Program Files\Update Services\WebServices\suscomp.dll" staticCompressionLevel="10" dynamicCompressionLevel="0" />`

4.65. Close and save the file

4.66. Close the File Explorer window

4.67. Right click the **Windows** icon in the taskbar and select **Command Prompt (Admin)** from the menu.

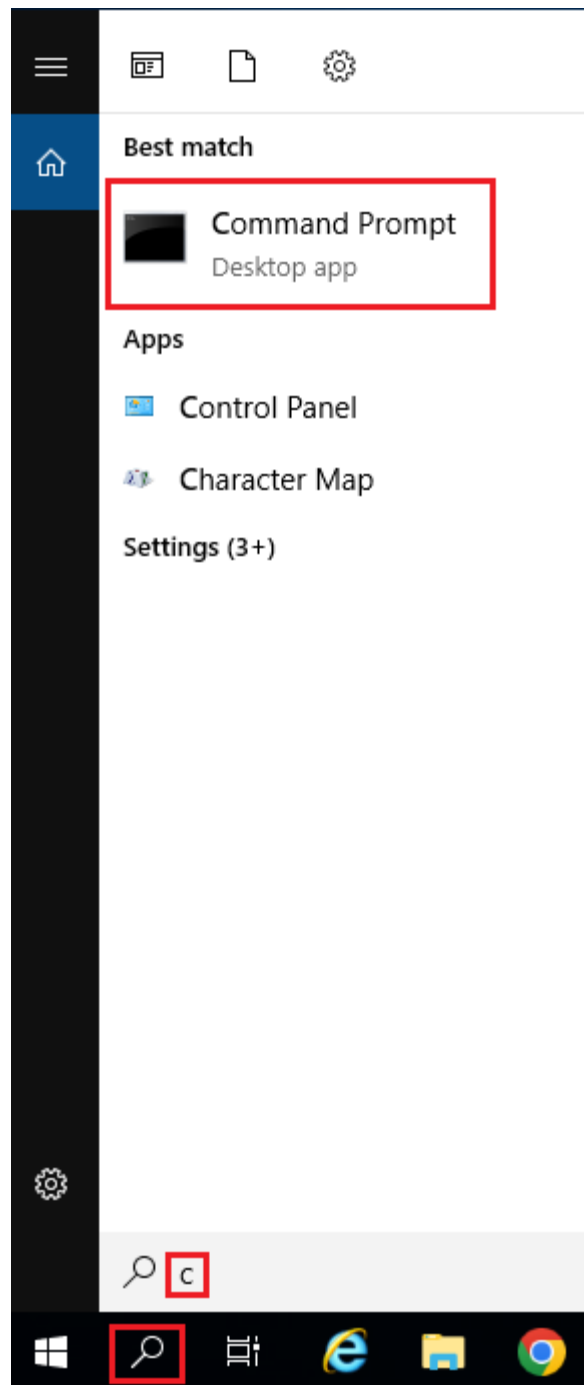


If you don't see **Command Prompt (Admin)** in the menu, follow the steps below to open Command Prompt in Administrator mode.

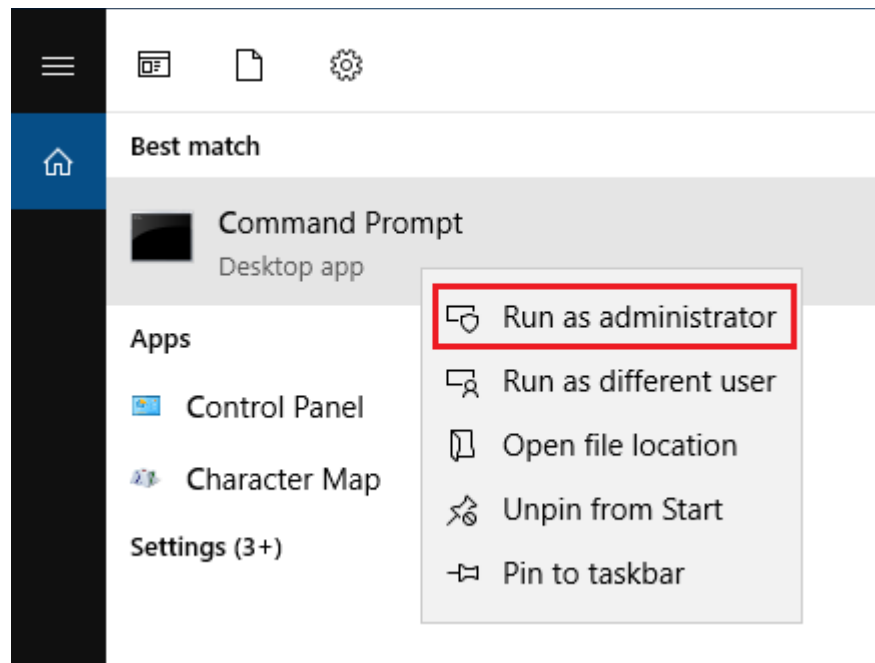
- Click the **Search** icon next to the **Windows** icon.



- Type "c" in the search box, this will list matching applications. From the results locate **Command Prompt**.



- Right-click on the **Command Prompt** and select “**Run as Administrator**”.



4.68. In the Command Prompt window, type **iisreset** then press **Enter** key

4.69. Type **exit** and press **Enter** key

```
Administrator: Command Prompt
Microsoft Windows [Version 10.0.14393]
(c) 2016 Microsoft Corporation. All rights reserved.

C:\Windows\system32>iisreset

Attempting stop...
Internet services successfully stopped
Attempting start...
Internet services successfully restarted

C:\Windows\system32>exit_
```

4.70. Close all open windows.

4.71. Log out of Administrator if you have no other administrative tasks to perform.

4.72. Share the following information with the Olympus installer when requested:

4.72.1. WSUS server IP address and port number (e.g., <http://10.161.1.240:8530>)

4.72.2. WSUS Group Name for the OLYSENSE Hubs to use