

Original Equipment Manufacturer (OEM) Versus Third-Party Repair Comparison

Compromising Quality: The Risks of Third-Party Repairs in Endoscopy



Original Equipment Manufacturer (OEM) Versus Third-Party Repair Comparison

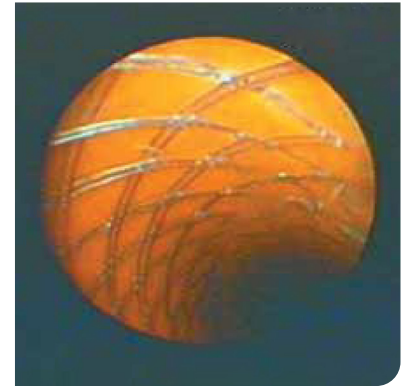
Compromising Quality: The Risks of Third-Party Repairs in Endoscopy

Common Examples of Third-party Vendor Defects Found in Refurbished Scopes:

Non-Olympus Instrument Channel

This is the instrument channel of a flexible scope that has been refurbished by a third-party vendor using a non-Olympus part. Notice the wire cage reinforcing the channel tube. In contrast, the interior of an original Olympus channel is smooth and doesn't require such reinforcement. Olympus® channels are engineered with advanced technology that resists collapsing without the need for a cage.

The non-Olympus part depends on the cage for performance. This cage may cause therapeutic devices to become lodged in the channel, and bio-burden can accumulate on the cage, even after reprocessing. This could lead to damage to the scope and increase the risk of patient cross-contamination.



Non-Olympus Braided Wire Mesh

The braided wire mesh covering the bending section of a flexible endoscope is critical for performance. When Olympus repairs the braided wire mesh covering, experienced service technicians carefully remove the frayed or damaged section and replace it with a new Olympus braided wire mesh covering. This maintains the scope's integrity and performance, while preserving the necessary electrical isolation properties.

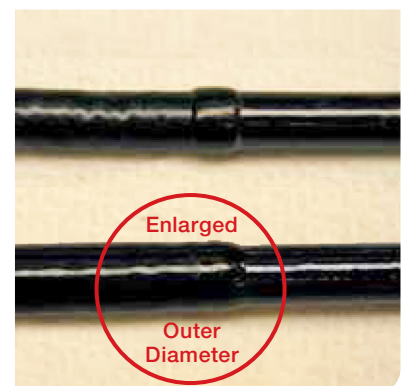
In contrast, the third-party vendor that refurbished this scope did not replace the frayed mesh. Instead, they wrapped it with Teflon® plumber's tape, raising concerns about the scope's electrical isolation and potential performance issues.



Non-Olympus Flexible Endoscope

The image displays, at the top, an Olympus-refurbished flexible endoscope and, at the bottom, a third-party vendor refurbished scope. The Olympus-refurbished scope adheres to the original equipment manufacturer (OEM) specifications for outer diameter, maintaining the integrity of the scope's performance and compatibility.

In contrast, the scope, refurbished by a third-party vendor, features an enlarged outer diameter, which deviates from the original Olympus specifications, compromising both performance and compatibility. Despite this, the third-party vendor repair was marketed as 'returning the scope to OEM specifications'.



Original Equipment Manufacturer (OEM) Versus Third-Party Repair Comparison

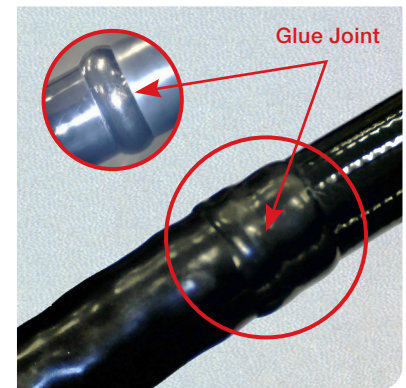
Compromising Quality: The Risks of Third-Party Repairs in Endoscopy

Common Examples of Third-party Vendor Defects Found in Refurbished Scopes:

Non-Olympus Bending Section

The glue joint material used in the bending section cover has not been validated for compatibility with Olympus® components, and as such, adhesion is dependent on the material's compatibility.

Moreover, the diameter of the glue joint will alter the stated diameter in the Instructions for Use (IFU), which is essential for determining the appropriate accessories for the scope. This dimension is crucial in selecting the proper scope for procedures, as it can impact the choice of scope based on the patient's physical characteristics.



Non-Olympus Insertion Tube

Non-Olympus insertion tubes may affect the feel and function of the scope, altering flexibility and rigidity. Measurement indicators can be inaccurate, leading to potential documentation errors. Unlike Olympus tubes, which feature clear 10 cm markings and the 'Olympus' logo near the boot, third-party tubes may have different, inconsistent marking scales, causing confusion.

Olympus tubes use helical bands to ensure that the movement at the grip is mirrored by the distal end. For example, a 90-degree twist at the grip results in a 90-degree movement at the distal end. Some non-Olympus tubes have "spring" to them, causing less movement at the distal end compared to the grip.



Non-Olympus Light Guide Lens

Non-Olympus light guide lenses may affect light transmission due to differences in lens shape, which can alter the direction of light. Lenses are designed with a central focal length to illuminate a specific area during a procedure, but the clarity of light and focal length may be compromised with third-party lenses.

Additionally, adhesive compatibility with the lens unit may be insufficient, allowing the lens to be dislodged if the distal end is impacted.



Original Equipment Manufacturer (OEM) Versus Third-Party Repair Comparison

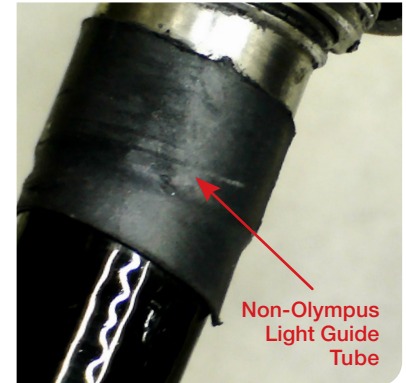
Compromising Quality: The Risks of Third-Party Repairs in Endoscopy

Common Examples of Third-party Vendor Defects Found in Refurbished Scopes:

Non-Olympus Light Guide Tube

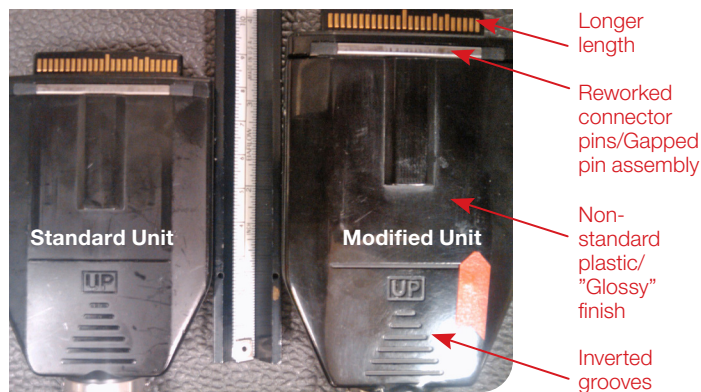
The glue joint material used in the bending section cover has not been validated for compatibility with Olympus® components, and as such, adhesion is dependent on the material's compatibility.

Moreover, the diameter of the glue joint will alter the stated diameter in the Instructions for Use (IFU), which is essential for determining the appropriate accessories for the scope. This dimension is crucial in selecting the proper scope for procedures, as it can impact the choice of scope based on the patient's physical characteristics.



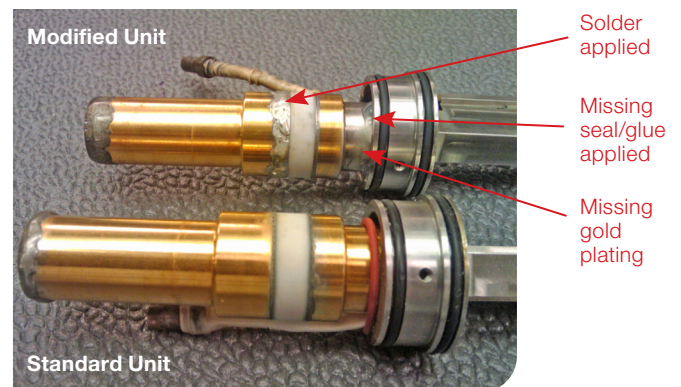
Non-Olympus Video Connector

A third-party vendor repaired the video connector by altering its length, reworking the connector pins, and creating gaps in the pin assembly. Additionally, a non-standard glossy plastic finish was applied, and the grooves were inverted, which can affect both performance and compatibility.



Non-Olympus Control Body Handle

A third-party vendor repaired the control body handle by altering its size, applying solder, and failing to seal it with the proper sealant and adhesive, potentially compromising its integrity. Additionally, the gold paint was missing, which could affect both the handle's durability and its aesthetic appearance.



Olympus is a registered trademark of Olympus Corporation, Olympus America Inc., and/or their affiliates. | Medical devices listed may not be available for sale in all countries.

OLYMPUS

OLYMPUS AMERICA INC.
3500 Corporate Parkway, PO BOX 610, Center Valley, PA 18034

For more information, contact your Olympus sales representative, or call 800-848-9024.
www.medical.olympusamerica.com

©2025 Olympus America Inc. All rights reserved.
Printed in USA OAI GE0225FLY55458