

EVIS EXERA II™ BRONCHOVIDEOSCOPE OLYMPUS BF TYPE Q180-AC



Main Features

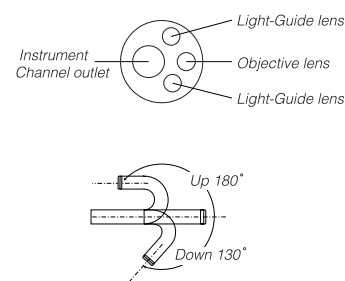
- Excellent image quality and large image size facilitate examination in the bronchial tree.
- World's first autoclavable design in a flexible bronchovideoscope.
- Narrow Band Imaging™ capability improves observation of anatomical structures.
- Slim design measuring 5.3 mm across at the insertion tube and 5.5 mm across at the distal end.
- Standard 2.0 mm diameter channel to accommodate a wide variety of endo-therapy accessories.
- Compatible with Olympus Electrocautery devices. Compatible with Laser treatment.
- Fully compatible with the Olympus CV-180 (and CV-160/CV-140) video processor and CLV-180 light source.
- Scope ID function stores individual scope information and displays it on the monitor to help facilitate management in pulmonary labs and operating rooms.

- Autoclavable Water-Resistant Cap (MAJ-1214) is provided to protect electrical connections during autoclaving.



Specifications

Optical System	Field of view	120°
	Direction of view	0° (Forward viewing)
	Depth of field	3 ~ 100 mm
Insertion Tube	Distal end outer diameter	5.5 mm
	Insertion tube outer diameter	5.3 mm
	Working length	600 mm
Instrument Channel	Channel inner diameter	2.0 mm
	Minimum visible distance	3 mm from distal end
	EndoTherapy accessory entrance/exit position in field of view	
Bending Section	Angulation range	UP 180°, DOWN 130°
Electro-Cautery Instrument Compatibility		YES (Compatible with Olympus devices)
Laser compatibility		Nd: YAG, 810nm diode
Total Length		870 mm
Autoclave Compatibility		YES



Ancillary product



MAJ-178
Instrument tray for autoclavable bronchovideoscope.



EVIS EXERA II CV-180 Video System Center
Designed to accommodate a wide range of scopes from a myriad of specialties, this leading-edge video processor offers high-resolution images and state-of-the-art image processing capabilities such as Narrow Band Imaging™ as well as a range of practical digital solutions.



EVIS EXERA II CLV-180 Xenon Light Source
With its powerful 300-watt xenon lamp, this light source unit delivers brilliant, shadow-free illumination and is equipped with filters that have been specially coated for use in Narrow Band Imaging™ mode. A new button on the front panel lets you turn the lamp on or off without having to power down the light source unit itself.

Specifications, design and accessories are subject to change without any notice or obligation on the part of the manufacturer.



OLYMPUS MEDICAL SYSTEMS CORP.
Shinjuku Monolith, 3-1 Nishi-Shinjuku 2-chome, Shinjuku-ku, Tokyo 163-0914, Japan
OLYMPUS MEDICAL SYSTEMS EUROPA GMBH
Postfach 10 49 08, 20034 Hamburg/Wandlstraße 14-18, 20097 Hamburg, Germany
OLYMPUS AMERICA INC.
3500 Corporate Parkway PO Box 610, Center Valley, PA 18034-0610, U.S.A.
OLYMPUS SURGICAL & INDUSTRIAL AMERICA INC.
One Corporate Drive, Orangeburg, New York 10962, U.S.A.
OLYMPUS LATIN AMERICA, INC.
6100 Blue Lagoon Drive, Suite 990 Miami, Florida 33126-2067, U.S.A.
KEYMED LTD.
Keymed House, Stock Road, Southend-on-Sea, Essex SS2 5QH, England

OLYMPUS SINGAPORE PTE LTD.
491B River Valley Road #12-01/04 Valley Point Office Tower Singapore 248373
OLYMPUS HONG KONG AND CHINA LIMITED
Room 1525-1527, Ocean Centre, 3 Canton Road, Tsimshatsui, Kowloon, Hong Kong
OLYMPUS (BEIJING) SALES & SERVICE CO., LTD.
Room 1202, NG Tower, A12 Jianguomenwai Avenue Chaoyang District Beijing, 100022, China
OLYMPUS MOSCOW LIMITED LIABILITY COMPANY
117071, Moscow, Malaya Kaluzhskaya 19, bld. 1, fl.2, Russia
OLYMPUS AUSTRALIA PTY LTD
31 Gilby Road, Mount Waverley, VIC., 3149, Australia

www.olympus.com



Your Vision, Our Future

EVIS EXERA II™ BRONCHOVIDEOSCOPE
OLYMPUS BF TYPE Q180-AC



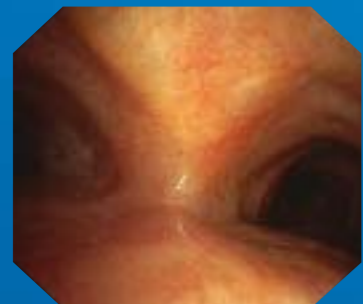
World's first autoclavable flexible bronchovideoscope brings you outstanding image performance, and expanded image size



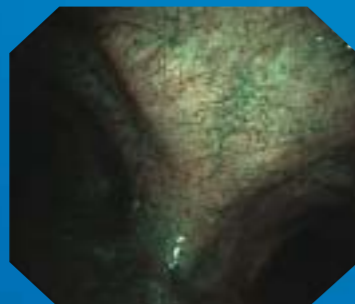
High image quality and large image size for various procedures in the bronchial tree

The clinical importance of bronchoscopy cannot be underestimated. With the introduction of the BF-Q180-AC, Olympus is unveiling an impressive new era of bronchoscopic performance.

Excellent image quality



Conventional image



NBI image



Conventional image

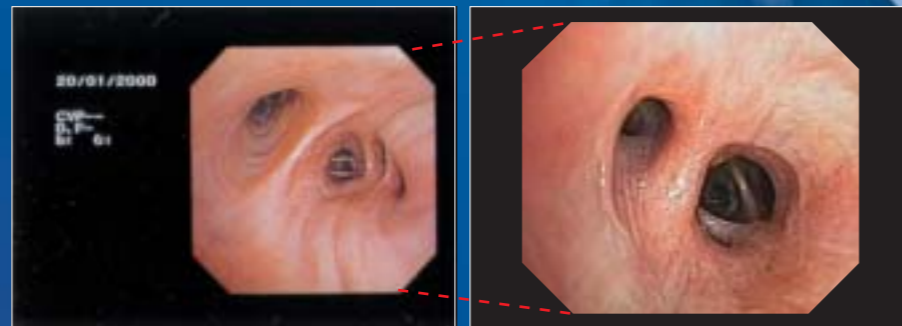


NBI image

When it comes to image quality, Olympus never compromises. And that's why the BF-Q180-AC offers a level of image quality that's the best ever from an Olympus bronchoscope. Images are clear and sharp throughout the viewing area, ensuring that the bronchial tree is observed with clarity and color fidelity.

Large image size for easier viewing

The BF-Q180-AC displays images on screen in a larger, easier-to-view size. Now textures of the bronchial walls may be examined in more detail.



World's first flexible bronchovideoscope to feature an autoclavable design



Responding to the demand for bronchovideoscopes that are autoclavable, Olympus developed the BF-Q180-AC. As the first of its kind in the world, the innovative BF-Q180-AC with its built-in channel is setting a new standard for flexible bronchovideoscopes with its unique autoclavable design.

Resistant to extreme temperatures and pressures

Although its insertion tube is made of flexible resin, the BF-Q180-AC is able to safely withstand the high temperatures and pressures of autoclaving



Enhanced overall durability to withstand autoclaving

In fact, every part of the BF-Q180-AC — from its insertion tube to its CCD and lenses — has been designed to withstand repeated exposure to the high temperatures and high pressures of autoclaving.

